

# MAR MAC FARMS



## COMPLETE BLACK ANGUS DISPERSAL

*Selling Females - Herdsires - Semen - Embryos*  
WITH SELECT GROUP OF RED ANGUS & SIMMENTAL FEMALES



## NEW GENERATION

MONDAY, DECEMBER 13, 2021

1 PM - AT THE FARM, BRANDON, MANITOBA

*female sale*

## Welcome From Mar Mac Farms

*It is with a tear in my eye that I write this welcome to our Black Angus Dispersal. It will be hard to part with this group of females as we have worked diligently to develop cow families and produce females with good udders, femininity, depth of body, and ease of fleshing. Trends or fashions have never swayed us from our original goal of developing Black Angus cattle that will work in the Commercial and Purebred industry.*

Blair's family has raised Black Angus cattle for 66 years. Lois was raised with Shorthorn, Simmental, and Hereford cattle at Kinnaber Cattle Co., near Souris, Manitoba. Mar Mac Farms is a fourth-generation family farm located southwest of Brandon, Manitoba. Starting the herd in 1955 with Black Angus, Mar Mac grew by adding Simmental genetics in 1976 and Red Angus in 1983 and built a cowherd of 200 breeding stock. We feel these three programs complement each other well. When we married, Lois sold her Hereford females and purchased a couple of Angus females from a group her Dad purchased from Styles Plainview Angus of South Dakota. Initially, our Angus business went under the name of McRae Farms until Blair's Dad retired, then we attained the Mar Mac Farms name.

Our goal is to produce predictable, functional cattle that will work in the real world. We do not pamper the cows. They graze on corn and hay until January; then are expected to calve on their own and re-breed while being fed a silage TMR ration. Our cowherd is culled annually on feet and legs, performance, and fertility. If they do not measure up, they are sold. We use embryo transplanting extensively in our program, selecting proven females to enhance the calf crop. We choose our herd sires based on performance, ease of fleshing, docility, and structural soundness. Our bloodlines have been well-represented in consignments to several elite female sales across Canada by Mar Mac and many of our customers. **Our calves were weaned September 1, 2021 - Bull calves will be on display sale day! Cow pictures where taken in the summer while cows were milking.**

Here at Mar Mac Farms, we are very involved in various livestock association boards and strive to keep up continually with the changes the industry experiences. We thoroughly enjoy the cattle business. It has been our primary focus and livelihood, and now our children have followed in our footsteps. Our son, Brett, and his wife Chantel and nine-month-old son, Corbin, will continue to merchandise their May-born Black and Red Angus Bulls in the annual Mar Mac Farms and Guests Bulls Sale. Our daughter, Melissa, keeps very busy taking photos and videos for her business, Prairie Pistol Designs, and conducting online sales for DLMS. She will continue to grow her Simmental and Red Angus herd.

We made the difficult decision to sell off the Black Angus division of our business to lessen the workload, retaining our Simmental and Red Angus herds. We are incredibly proud of this group of females and herd sires presented in this offering. These females are **parent-verified**. Many of them are A.I'd to proven Angus sires and a large number of females are under four years of age. Their bull calves will be on display sale day but will be retained to sell, March 9, 2022, in our Mar Mac Farms and Guests Bull Sale.

**We invite you to take the time to go through the offering and see their dams and sires and learn more about our program. We hope you can join us to celebrate this chapter in the Black Angus industry.**

Sincerely Lois and Blair McRae and family.

## Sale Day Phones

SALE BARN- 204-728-3058

SALE BARN - 204-727-7744

BLAIR - 204-729-5439

LOIS - 204-573-5192

BRETT - 204-729-1018

MELISSA - 204-573-9903

# MAR MAC FARMS

*trust the brand*

Blair, Lois and Melissa McRae  
RR1 Box 57

Brandon, Manitoba, Canada R7A 5Y1

h-204-728-3058 f- 204-727-7744

marmacfarms1@gmail.com

www.marmacfarms.net

## MCRAE LAND & LIVESTOCK

Brett, Chantel & Corbin McRae

RR1 Box 58 Brandon, Manitoba R7A 5Y1

204-729-1018

brett.mcrae@icloud.com

# BIXS



# NEW GENERATION

MONDAY, DECEMBER 13, 2021  
1 PM - AT THE FARM, BRANDON, MANITOBA

*Female sale*

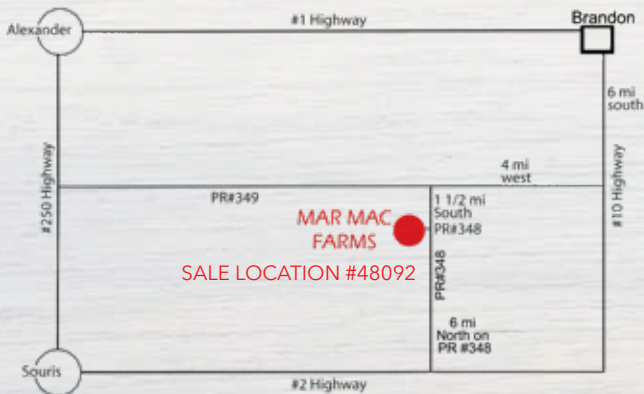
**Can't make it to the sale?**  
**Internet Bidding Available.**

To view this sale visit [www.dlms.ca](http://www.dlms.ca), Fill out the registration form located under registration and sign-up for your free user account and select a username and password.

**BIDDERS** - To be approved as a bidder, Log in to [dlms.ca](http://dlms.ca) and click BUYER APPROVAL tab, select the sale you are interested in bidding at and click sign up.

For more information  
Call DLMS Reps:  
Mark Shologan - 780-699-5082 or  
DLMS Purebred Team 780.991-3025

**DLMS**  
[www.dlms.ca](http://www.dlms.ca)



**WESTJET FLIES DIRECT TO BRANDON**  
sale site located 30 minutes from airport

## SALE STAFF:

Chris Poley (T Bar C Cattle Co.)	Auctioneer	306-220-5006
Shane Michelson (T Bar C Cattle Co.)	Ring Staff	403-363-9973
Ben Wright (T Bar C Cattle Co.)	Ring Staff	519-374-3335
Rob Voice (Bohrson Marketing)	Sale Consultant	306-270-6082
Shane Castle (Castlerock Marketing)	Sale Consultant	306-741-7485
Scott Atkins (Boehringer Animal Health)		204-750-2548

## SPECIAL REPS:

*Angus*  
Canadian Angus President - Sheldon Kyle  
Canadian Angus CEO - Myles Immekar  
Manitoba Angus President - Dallas Johnston  
CAA Director Business Development, MB and SK - Bob Toner  
*Simmental*  
CSA President - Marlin Le Blanc  
CSA CEO - Bruce Holmquist  
Manitoba President - Melissa McRae

## PHOTOGRAPHY, VIDEO AND CATALOGUE PRODUCTION

Prairie Pistol Designs - Melissa McRae

## WESTJET NOW FLIES TO BRANDON

Arrives at 12:15. If you need a ride from Airport sale day contact Mar Mac before hand to line up transportation to the farm.

## DELIVERY

Buyer is responsible for delivery.  
Mar Mac will assist in arranging delivery if needed.  
US purchasers will be responsible for Brokerage fees.

## SALE HEADQUARTERS:

Canad Inn - 204-727-1422 *block booked under Lois McRae*  
Days Inn - 204-727-3600  
Holiday Inn Express - 204-717-4444

## *On Offer*

2 BLACK ANGUS HERDSIRES | 32 BLACK ANGUS COWS  
12 BLACK ANGUS BRED HEIFERS | 16 BLACK ANGUS HEIFER CALVES  
5 RED ANGUS BRED HEIFERS START AT LOT 52  
6 SIMMENTAL BREDS START AT LOT 57  
ENTIRE BLACK ANGUS SEMEN & EMBRYO COLLECTION



**JOIN US FOR A ROAST BEEF LUNCH AT NOON, BEEF PREPARED BY J&S MEATS, SOURIS, MB**

BOEHRINGER INGELHEIM PROUDLY RECOGNIZES

# MAR MAC FARMS

AS AN

## EXPRESS<sup>®</sup> FP VACCINATED HERD

EXPRESS<sup>®</sup> FP is the most complete family of modified live virus (MLV) vaccines\*, offering a strong level of BVD fetal protection.

Mar Mac Farms bred heifers have been vaccinated pre-breeding with EXPRESS<sup>®</sup> FP to provide the developing calf guaranteed protection against the detrimental effects of BVD.

**Peace of Mind Boehringer Ingelheim EXPRESS<sup>®</sup> FP Guarantee.** If you find a BVD Persistently Infected (PI) calf from one of our EXPRESS<sup>®</sup> FP vaccinated heifers sold today, Boehringer Ingelheim will pay the fair market value in cash, plus the cost of testing.\*

## PREVENT BVD PI CALVES IN YOUR OWN HERD



MAR MAC  
FARMS

Learn more at [EXPRESSVerified.ca](https://www.expressverified.ca) or  
call **Scott Atkins** at (204) 750-2548.

EXPRESS<sup>®</sup> FP

\* The EXPRESS<sup>®</sup> FP Family of vaccines includes Express<sup>®</sup> FP5, Express FP5 /Somnugen<sup>®</sup>, Express<sup>®</sup> FP5 VL5, and Express<sup>®</sup> FP10.

EXPRESS<sup>®</sup> FP is a registered trademark of Boehringer Ingelheim Vetmedica GmbH, used under license.  
©2021 Boehringer Ingelheim Animal Health Canada Inc. All Rights Reserved.



## T BAR C CATTLE CO.

CHRIS DOLEY: 306-220-5006

Welcome to the Mar Mac “New Generation Sale”, December 13, 2021, at the farm, just minutes out of Brandon, Manitoba. This sale features the complete dispersal of their Black Angus herd with a few Red Angus and Simmentals. To say that this event will be one of the feature sales in Manitoba would be an understatement.

Successfully breeding superior seed stock takes generations and this couple were born with superior seedstock in their blood. When Blair and Lois married, it created a combination of two very successful families that have been seed stock suppliers for generations. The McRae Family's success stems back to the box-car days and the Winter Fair and the Gordon Family need no introduction for Kinnaber Farm. Each generation has improved, got better, more competitive in both the auction ring and the show ring. Blair and Lois host a highly successful bull sale each spring, built on quality and repeat customers. This success stems from the theory “take nothing for granted!”

The cow herd is powerful to say the least. Touring the pastures and seeing deep bodied cows with big fat calves will impress even the skeptics. To produce powerful consistent bulls for the seedstock and commercial industry takes strength through the cow herd... these are some of the best.

Only in a dispersal, can one select from the top of the program whether it's a foundation dam, or a current year prospect, you can select with the assurance that nothing is being held back. Great families, build herds on cow families... what an opportunity to explore and discover your next front pasture female... or even a trailer load.

Plan to be with us as we write another chapter in Angus history with the Mar Mac Black Angus Dispersal. The cattle are the right kind, the people are the right kind, and the time is right... take advantage of the rewards offered through Mar Mac labor!

Plan to be with us in person, online or on the phone for “The New Generation Sale”. During these times, feel free to give any of the T Bar C Team a call and we will be pleased to assist you in a professional and confidential manner with your selections.

## VIRDEN ANIMAL HOSPITAL

## NADINE WOHLGEMUTH

The cattle at Mar Mac Farms are on a complete herd health program with the goal of preventing disease rather than treating disease. The cow herd receive a pre-breeding Express FP 5 vaccine prior to breeding to prevent issues with viral diseases such as, BVD and IBR. Prior to calving for scour prevention in newborn calves, the cows receive an annual dose of Scour Bos 9 and heifers receive the priming Scour Bos 4 and Scour Bos 9. At birth the calves are given intranasal vaccines Inforce and Once PMH to minimize respiratory pneumonia as baby calves. At grass turn out, calves are given a second dose of Inforce, as well as One Shot BVD and Ultrabac 7/Somubac. At weaning, the calves are weaned with the low stress weaning system utilizing Quiet Weans. The calves are given a booster of Bovishield Gold One Shot and Ultrabac 7/Somubac. In early January a dose of Express FP 5 is administered to the sale bulls. The combination of cows receiving Express FP 5 pre-breeding and the bulls receiving a dose makes them eligible for the Express Verified Program guaranteeing against BVD PI animals. Whether you are purchasing a bred cow/heifer or a breeding bull from Mar Mac Farms you can be assured they come from a solid herd health program.

## JUNIOR INCENTIVE PROGRAM

Buy any heifer calf in the sale and participate in the National Junior Simmental or your Provincial YCS show, National Junior Angus Show or Provincial Junior Angus Show.

**Class winners receive \$100**

**Division Champions \$250**

**Grand Champion Female \$500**

*to a maximum of \$500*

**REMEMBER SHOWDOWN WILL BE IN MANTIOBA LATE JULY!**

*We feel very strongly that youth are the future of our industry!!!*

# MAR MAC FARMS

*Celebrating 66 years in Angus*



In 1950, the Winnipeg Flood caused the Angus herd developed by the University of Manitoba and their "Managra" prefix to be moved to the W.F. McRae Farm. These Angus cattle were then sold to W.F. McRae to form the foundation herd. In 1955, W.F. McRae of Hayfield became a member of the Canadian Angus Association with his sons, Howard and Allan. The McRae family hosted the Manitoba Angus field day in 1955 at

their farm, drawing 650 people. When Allan McRae married in May 1956, he and Howard divided the cowherd. This was the formation of Mar Mac Farms.

Throughout the 70's, the McRae's won many championship pens of 5 Angus steers along with carcass championships with Angus steers. The highlight was in 1976 when their Champion Angus Carcass sold for \$7.00 per lb. In 1979, Mar Mac Farms sold their mature cowherd to Brookmore Angus, Brookdale, MB. Allan's eldest son "Blair" kept the heifer calf crop and continued to develop his Angus herd. In the late 70's, Blair served as a director on the Manitoba Angus Board.



In 1983, Blair married Lois (Gordon) of Souris and they developed their Black Angus program from Blair's Angus and a group of females Lois had brought from Kinnaber Cattle Co.

In 1987, we raised McRae's Brittany 74U, she went on to be the Grand Champion Female at Ag Ex in Brandon. At Agribition that year, we were made an offer for a good price to sell Brittany. As young beef producers just getting started, we wanted to build our herd around this bloodline. Brittany 74U was the foundation of the Bridget Cow Family; there are 27 lot in this sale that trace back to her.



Over the years, Mar Mac and Gordon's exhibited the Grand Champion Angus Bull in 1979, 1984, 1988, 1989 and 1990 at the Royal Winter Fair in Brandon. One big highlight was in 1990 as we raised the Grand Champion Angus Female at Ag Ex and she went on to be Reserve Grand Champion Angus Female at Canadian Western Agribition. She sold in the Agribition Sale for \$9750. to Randy Remington. Her first calf was a bull called Black Reign who went on to be the 1991 First Black Sweepstakes winner in Edmonton.

We have exhibited Angus cattle at Ag Ex in Brandon, Farm Fair and Agribition in Regina. This year as we celebrate 50 years of Agribition, Lois has not missed one of the Agribition's since day one.

In 2005, At the Centennial AGM and Showdown, Mar Mac Farms was honored to host the supper for close to 400 guests on the Friday night at the farm along with herd displays and the Canadian Junior Angus cook-off. In 2005 Mar Mac celebrated 50 years in Angus. Manitoba worked really hard



to combine the 100th Anniversary Canadian Angus Annual Meeting and the Canadian Junior Angus Showdown all in one place at Brandon, Manitoba. Lois, Blair and Brett were on the Centennial Committee and Lois was the Manitoba Angus President that

year. It was always a goal of Lois's to have the two events all in one location and Manitoba showed the Angus community what an amazing event it could be.

In 2007, Mar Mac Farms were the Manitoba Angus Breeders of the Year, the Van Daele Award. In 2009, the McRae family headed to the World Angus Forum along with a group of Manitoba breeders. This once in a lifetime opportunity at Spruce Meadows was one we will never forget those top notch Red and Black Angus cattle out showing on the green grass show rings with a huge crowd watching. Mar Mac Farms ended up with a second place ribbon for a Black Angus Female, McRae's Brittany 33U (many females go back to this Bridget cow family in the sale) it was truly an accomplishment with the caliber of cattle on hand.

Blair was asked by the Canadian Angus Association to act as Manitoba field man from 2011-2013. Blair really enjoyed meeting the buyers and learning the techniques and challenges of the auction marts in the province.

Lois has served on the Manitoba Angus Board from 1987-2007 as President, Vice President and board member. In 2004 and 2005, Lois was the Manitoba Angus President. One of the most exciting and rewarding parts of the Angus is being elected on the Board of Directors of the Canadian Angus Association. In 2008-2014 Lois was honored to represent Manitoba on the Canadian Angus Board. The most rewarding day was the day the Canadian Angus Board broke the ground for the new Angus office and the day we officially opened the doors in 2012. Exciting times in the Angus breed. In 2014 and 2015, Lois worked for the Canadian Angus as a field person for the commercial sales, an interesting and educational position. Lois has been the co-editor of the Manitoba Angus Newsletter which produces 3 newsletters a year since 2006 till present.



Our children, Brett and Melissa are very involved in the Angus Breed. They have exhibited and assisted in the organization of the Manitoba Junior Angus Shows, and many of the Showdowns across Canada.



Brett has served as President and Treasurer of the Manitoba Junior Angus Board. In 2005- 2007, Brett served as Manitoba Representative on the Canadian Junior Angus Board. Brett expanded his Angus herd in 2013 with a select group of Black Angus Females from Fertile Valley Angus. In 2016, Brett acquired the use of 50 Black Angus Females from the Sandy Bar Herd to expand his Black Angus numbers. Brett and wife Chantel, operates under McRae Land and Livestock.

Melissa has served as Secretary and Treasurer of the Manitoba Junior Angus Board. In 2007-2010, Melissa served on the Canadian Junior Angus Board. In 2013, Melissa was selected to represent Canada at the World Angus Forum in New Zealand. Melissa and her teammates competed in the first ever World Angus Forum Youth Competition and were lucky enough to be named the first ever World Champion Angus Youth Team. Melissa works in the livestock industry doing cattle photography, video production, graphic design as well as a purebred rep for DLMS.



Youth has always been very important to the McRae family and currently Lois is the Chairperson for the 15th year of the Manitoba Youth Beef Roundup, and Blair is

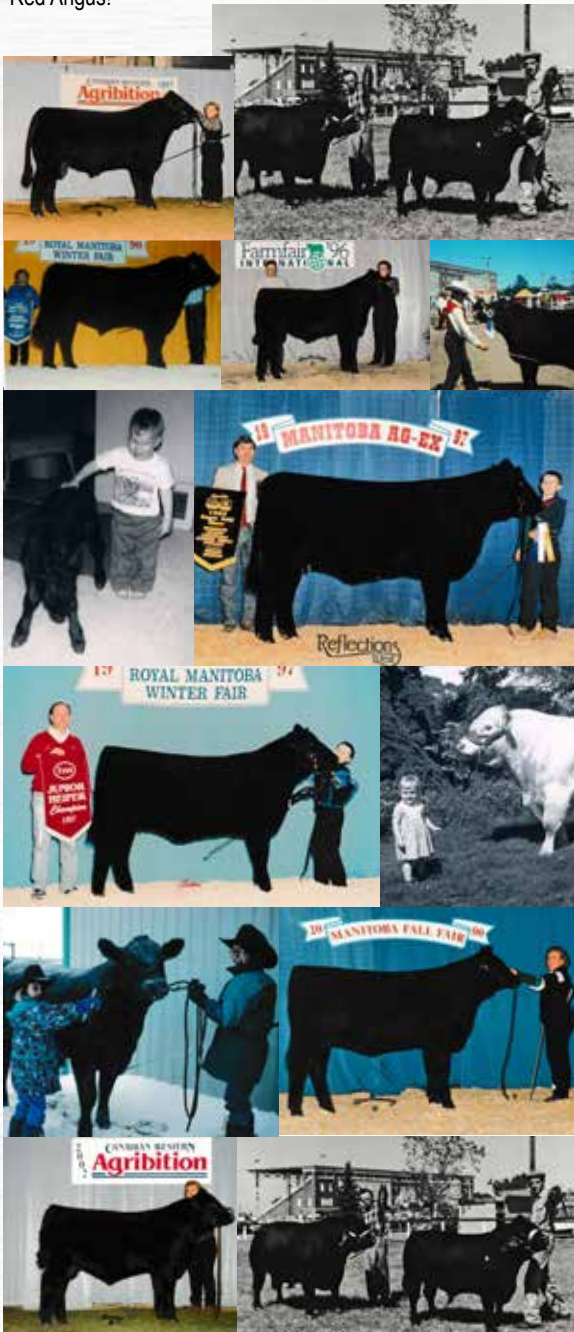
a member on the board. This event has combined the Manitoba Junior Angus show and other breeds into an educational cattle weekend.

Annual Bull Sales have been held for the past 25 years and the last 11 years the Mar Mac Bull sale has been held at the farm. New Generation Female Sale will be held on the farm every third year.

As founding members of the Keystone Classic Angus Sale, Mar Mac has exhibited sale cattle for the past 31 years.

We have exported cattle to United States and Davis Rairdan have exported Angus embryos around the world for Mar Mac Farms. Davis Rairdan ET have been doing embryo transplant for the past 29 years for Mar Mac on the farm. It has been a valuable tool to enhance our breeding program using only proven females.

It has been exciting times in the Angus business, and we will sad to leave the Black Angus side of it but watch for us with the Red Angus!



# Where it all began

## BRIDGET COW FAMILY



**MCRAE'S BRITTANY 74U**

Crackerjack Brutus female.

My dad, Bob Gordon purchased her mother, 14R from Styles Plainview Angus in South Dakota. I purchased the cow 14R and 74U was born!



**MCRAE'S BRITTANY 58Z**

Rito 2100 x McRae's Brittany 74U



**MCRAE'S BRITTANY 81C**

VDAR New Trend 315 x 58Z



**MCRAE'S BRIDGET 19F**

Stevenson Fortune x 81C

**MCRAE'S BRIDGET 51N**

FAR Kruggerand 410H x 81C

Dam to Bridget 125T (Donor Female)



**MCRAE'S BRIDGET 125T**

McRae's Power Point x 51N



**MCRAE'S BRIDGET 33U**

DMM Makin Waves 43M x 51N  
2nd place female at the World Angus Forum in Calgary 2009



**MAR MAC TIGER LILY 25Y**  
HF Tiger 5T x 33U (Donor Female)



**MAR MAC BRIDGET 13B**  
Cole Creek Cedar Ridge X 33U  
dam of many lots in the sale

We are so proud of this productive set of females that helped to develop the Bridget Cow Family. Take advantage of purchasing one of these Bridget descendants to start your own program.

# REFERENCE SIREs



SIX MILE *Horizon* 163H {2164362}  
SELLING AS LOT 44 (PG 37)



MERIT *Stoney Creek* 7035E {1986184}  
SELLING AS LOT 45 (PG 38) Owned by McRae Land and Livestock



HF *Tomahawk* 229E

HAMI 229E | 07 FEB 2017 | 1978667 | BW 86 LBS

HA OUTSIDE 3008  
HA COWBOY UP 5405  
HA BLACKCAP LADY 1602

HF TIGER 5T  
HF MAYFLOWER 191Z  
HF MAYFLOWER 78P

CE: 3.0 BW: 2.4 WW: 67 YW: 128 MCE: 4.0 M: 24  
HF Mayflower 191Z, *pictured above* - Dam of HF Tomahawk and HF Alcatraz



MAR MAC *All Star* 101G

KOF 101G | 14 FEB 2019 | 2089610 | BW 92 LBS

HA COWBOY UP 5405  
HF TOMAHAWK 229E  
HF MAYFLOWER 191Z

S A V RESOURCE 1441  
MAR MAC BRIDGET 58D  
MCRAS BRIDGET 125T

CE: 4.0 BW: 2.8 WW: 54 YW: 106 MCE: 4.0 M: 20  
Son of Tomahawk, *Grand Dam HF 191Z pictured above*

## BLACK ANGUS BREED AVERAGE

CE: 3.4 BW: 2.1 WW: 49 YW: 86 MCE: 6.6 M: 22

## YOUNGDALE *Finley* 90F

YDF 90F | 20 FEB 2018 | 2058062 | BW 91 LBS

PF HOOVER DAM 041  
YOUNG DALE HI DEFINITION 185B  
BLACK HAMCO COUNTESS 417T

RDDA OVERLOAD 2437R  
YOUNG DALE ELBA 24W  
YOUNG DALE ELBA 23N

CE: 4.0 BW: 3.2 WW: 61 YW: 106 MCE: 9.0 M: 21



## Service Sires



S A V RAINFALL 6846



HIGH POINT CACHE



MUSGRAVE 316 COLOSSAL 137



SCHIEFELBEIN ATTRACTIVE



# Bridget Cow Family



**lot 1**

## MAR MAC *Bridget* 58D

KOF 58D | 03/02/2016 | 1925050 | **BW 90** | PARENT VERIFIED

RITO 707 OF IDEAL 3407 7075	R R RITO 707
<b>S A V RESOURCE 1441</b>	IDEAL 3407 OF 1418 076
S A V BLACKCAP MAY 4136	S A V 8180 TRAVELER 004
	S A V MAY 2397
	STEVENSON BRUNO 561G
MCRAE'S POWER POINT 48M	MCRAE'S BRIDGET 19F
<b>MCRAE'S BRIDGET 125T</b>	F A R KRUGERRAND 410H
MCRAE'S BRIDGET 51N	MCRAE'S BRANDI 81C

**CE: 4.0 BW: 3.0 WW: 46 YW: 94 MCE: 4.0 M: 16**

2021 Calf: KOF 68J • Sired by KG Justified 3023 • BW: 72 • Sept 1 WW: 650

Bridget 58D has earned her way to be the Lot 1 female in our Black Angus dispersal. This Resource female puts it all together with her eye appeal, femininity, profile, tight udder and productivity. Her dam 125T from the **BRIDGET COW FAMILY** was a donor female who put it all together with productivity and performance.

Her sons have gone on and worked in many programs. Mar Mac Allstar 101G was used in the Mar Mac Farms program last year and left a strong set of calves. 58D's sons have averaged \$6375. Her son 68J will sell in our 2022 Bull Sale. To put the icing on the cake she sells bred to our exciting new herd sire: Six Mile Horizon.

An exciting mating out of a proven female.

AI Bred April 28 to High Point Cache 894 -19191398-  
**Exposed June 4-July 6 to Six Mile Horizon 163H -2164362-**  
*In vet's opinion safe to exposure. Due mid March.*



SON | MAR MAC ALLSTAR 101G  
 used in the our program



SON | MAR MAC HOLDEN 18H  
 working at Arthor and Jackie Jonasson's



# Bridget Cow Family



**lot 2**

MAR MAC *Bridget* 1C

KOF 1C | 16/01/2015 | 1853118 | BW 66 | PARENT VERIFIED

HF KODIAK 5R  
**HF TIGER 5T**  
 HF ECHO 84R

SANDY BAR ADVANTAGE 43M  
 WILBAR RUBY 955N  
 TC FREEDOM 104  
 HFDF ECHO 6N  
 CONNEALY IMPRESSION  
 ELLINA OF CONANGA 868 7127  
 DMM MAKIN' WAVES 43M  
 MCRAE'S BRIDGET 51N

CONNEALY IMPRINT 8317  
**MAR MAC BRIDGET 23A**  
 MCRAE'S BRIDGET 33U\*

CE: 14.0 BW: -0.8 WW: 42 YW: 84 MCE: 13.0 M: 22

2021 Calf: KOF 157J • Sired by Mar Mac Allstar 101G • BW: 78 • WW: 638

Here is a direct HF Tiger 5T daughter out of the **BRIDGET COW FAMILY** who will catch your eye sale day. Long bodied, thick made with a beautiful udder. Her sons average \$6675. Squirrel Creek purchased her 2020 son. If you want to add calving ease to your program here is a female that can do that for you but still has the performance all with it. Bred to Cache an exciting sire with high growth and leading carcass traits.

**AI Bred April 28 to High Point Cache -2087914-**

*In vet's opinion safe to AI*

Exposed June 4-July 6 to Six Mile Horizon 163H -2164362-



SON | MAR MAC HONOR 7H  
 Sold to Squirrel Creek Angus



SON | MAR MAC 11E  
 Sold to Crocus Valley Farm



# Bridget Cow Family



78C is a powerful individual with performance and productivity. Her sire was not used much in Canada so some outcross genetics that worked extremely well at Mar Mac. **LOT 3, 5 AND 6** and Mar Mac Blueprint 56B are all full siblings and have been assets to our program. From the **BRIDGET COW FAMILY**, this female has a daughter working at Madsen Angus, and 2 daughters, **LOT 4 & LOT 36** in the sale. Her son 162J will sell in our 2022 Bull Sale. Bred to Attractive, his sons were added attractions at many sales this spring. Lots of opportunity here.

**AI Bred April 28 to Schiefelbein Attractive 4565 -1938699-**  
*In vet's opinion safe to AI*  
 Exposed June 4-July 6 to Merit Stoney Creek 7035E -1986184-



SIRE TO LOT 3, 5, 6 | LT DRIVEN

## lot 3

### MAR MAC *Lily* 78C

KOF 78C | 10/02/2015 | 1874589 | **BW 94** | PARENT VERIFIED

L T BANDWAGON 3105	LEACHMAN RIGHT TIME
<b>LT DRIVEN 9087</b>	L T MS VIKINGS VALUE 0256
L T ASHLEY 3087	L T 598 BANDO 9074
	L A R PRECISION 1680 632
	HF KODIAK 5R
HF TIGER 5T	HF ECHO 84R
<b>MAR MAC TIGER LILY 25Y</b>	DMM MAKIN' WAVES 43M
MCRAE'S BRIDGET 33U*	MCRAE'S BRIDGET 51N

**CE: -3.0 BW: 3.6 WW: 52 YW: 91 MCE: 0.0 M: 25**

2021 Calf: KOF 162J • Sired by Merit Stoney Creek 7035E • BW: 98 • WW: 684

## lot 4

### MAR MAC *Lily* 157G

KOF 157G | 26/03/2019 | 2089325 | **BW 86** | PARENT VERIFIED

HA COWBOY UP 5405	HA OUTSIDE 3008
<b>HF TOMAHAWK 229E</b>	HA BLACKCAP LADY 1602
HF MAYFLOWER 191Z	HF TIGER 5T
	HF MAYFLOWER 78P
	L T BANDWAGON 3105
LT DRIVEN 9087	L T ASHLEY 3087
<b>MAR MAC LILY 78C</b>	HF TIGER 5T
MAR MAC TIGER LILY 25Y	MCRAE'S BRIDGET 33U*

**CE: 0.0 BW: 2.8 WW: 67 YW: 120 MCE: 2.0 M: 24**

2021 Calf: KOF 27J • Sired by Musgrave 316 Stunner • BW: 98 • WW: 684



This 2-year-old female has done an amazing job on her first calf. She is one that is full of potential and is the working kind, she puts it all into her calf. From the **BRIDGET COW FAMILY**. We had the misfortune of losing her sire, Tomahawk as a 2-year-old with an infection in his heart but are grateful we got one crop of calves. As you can see these Tomahawk females work.

**AI Bred April 28 to SAV Rainfall 6848 -2013656-**

*In vet's opinion safe to AI*  
 Exposed June 4-July 6 to Six Mile Horizon 163H -2164362-



SON | MAR MAC STUNNER 27J

# Bridget Cow Family



An extremely long feminine Driven female out of the BRIDGET COW FAMILY who adds length of body to her progeny. Her son, Mar Mac Slammer 161H was a sale feature in the bull sale 2021 selling for \$7000 to WKN Farm. Bred to S A V Rainfall 6846 here is a female to check out on sale day. Rainfall is the S A V Coleman Charlo sire that has been adding calving ease, maternal strength and performance all in one package.

**AI Bred April 28 to SAV Rainfall 6848 -2013656-**

*In vet's opinion safe to AI*

Exposed June 4-July 6 to Merit Stoney Creek 7035E -1986184-



SON | MAR MAC SLAMMER 161H

## lot 5

### MAR MAC Lily 67C

KOF 67C | 08/02/2015 | 1874588 | BW 94 | PARENT VERIFIED

LT BANDWAGON 3105  
LT DRIVEN 9087  
LT ASHLEY 3087

HF TIGER 5T  
MAR MAC TIGER LILY 25Y  
MCRAE'S BRIDGET 33U\*

LEACHMAN RIGHT TIME  
L T MS VIKINGS VALUE 0256  
L T 598 BANDO 9074  
L A R PRECISION 1680 632  
HF KODIAK 5R  
HF ECHO 84R  
DMM MAKIN' WAVES 43M  
MCRAE'S BRIDGET 51N

CE: 1.0 BW: 2.3 WW: 44 YW: 78 MCE: 5.0 M: 19

## lot 5A

### MAR MAC Lily 77J

KOF 77J | 31/01/2021 | 2204485 | BW 86 | WW 705 | PARENT VERIFIED

YOUNG DALE HI DEFINITION 185B  
YOUNG DALE FINLEY 90F  
YOUNG DALE ELBA 24W

LT DRIVEN 9087  
MAR MAC LILY 67C  
MAR MAC TIGER LILY 25Y

PF HOOVER DAM 041  
BLACK HAMCO COUNTESS 417T  
RDDA OVERLOAD 2437R  
YOUNG DALE ELBA 23N  
LT BANDWAGON 3105  
LT ASHLEY 3087  
HF TIGER 5T  
MCRAE'S BRIDGET 33U\*

CE: 1.0 BW: 3.1 WW: 53 YW: 93 MCE: 7.0 M: 20



This fancy Finley female would make a Junior project for upcoming Showdown in Brandon 2022. She goes back to the BRIDGET COW FAMILY.



# Bridget Cow Family



LT Driven has left us a strong set of females and 41D is no exception. Deep bodied, long and excellent uddered female from the **BRIDGET COW FAMILY**. Her heifer calf 64J will be a feature sale day. She sells bred to the Renown son, S A V Renovation who is leaving easy fleshing, maternal females and a stout set of sons. This mating should leave exciting results.

AI Bred April 28 to  
**SAV Renovation 6822-1963240-**  
*In vet's opinion safe to AI*  
 Exposed June 4-July 6 to  
 Merit Stoney Creek 7035E -1986184-



LOT 6A & 6

## lot 6

### MAR MAC *Lily* 41D

KOF 41D | 31/01/2016 | 1925052 | BW 84 | PARENT VERIFIED

LT BANDWAGON 3105  
 LT DRIVEN 9087  
 LT ASHLEY 3087  
 HF TIGER 5T  
**MAR MAC TIGER LILY 25Y**  
 MCRAE'S BRIDGET 33U\*

LEACHMAN RIGHT TIME  
 L T MS VIKINGS VALUE 0256  
 L T 598 BANDO 9074  
 L A R PRECISION 1680 632  
 HF KODIAK 5R  
 HF ECHO 84R  
 DMM MAKIN' WAVES 43M  
 MCRAE'S BRIDGET 51N

CE: 1.0 BW: 2.3 WW: 44 YW: 78 MCE: 5.0 M: 20

## lot 6A

### MAR MAC *Lily* 64J

KOF 64J | 29/01/2021 | 2204482 | BW 84 | WW 705 | PARENT VERIFIED

MERIT STONEY CREEK 4023  
**MERIT STONEY CREEK 7035E**  
 MERIT BLACKCLASS 1184  
 LT DRIVEN 9087  
**MAR MAC LILY 41D**  
 MAR MAC TIGER LILY 25Y

HF PROWLER 43U  
 MERIT PRIDE 2010  
 BEVERLY HILLS VISA 734  
 MERIT BLACKCLASS 5195  
 L T BANDWAGON 3105  
 L T ASHLEY 3087  
 HF TIGER 5T  
 MCRAE'S BRIDGET 33U\*

CE: 1.0 BW: 2.7 WW: 48 YW: 78 MCE: 8.0 M: 23



This Stoney Creek female will be a feature sale day with her depth, capacity and performance.



# Bridget Cow Family



A full sister to Lot 1 here is a female that is an extremely easy keeper and adds performance to all her calves. A Resource female out of the **BRIDGET COW FAMILY**. Her son, Mar Mac Ranchman 62G a S A V President son sold to WKN Land and Cattle for \$7500. She has a VAR Geddes daughter in the sale Lot 38 and her son 151J sired by Stevenson Turning Point will be one of the stoutest bulls in our 2022 Bull Sale.

AI Bred April 28 to Musgrave  
316 Colossal 137 -2021884-  
Exposed June 4-July 6 to Merit Stoney  
Creek 7035E -1986184-  
*In vet's opinion safe to exposure.*  
Due mid March.



SON | MAR MAC RANCHMAN 62G

## lot 7

### MAR MAC *Bridget* 52B

KOF 52B | 05/02/2014 | 1814547 | BW 90 | PARENT VERIFIED

RITO 707 OF IDEAL 3407 7075	R R RITO 707
<b>S A V RESOURCE 1441</b>	IDEAL 3407 OF 1418 076
S A V BLACKCAP MAY 4136	S A V 8180 TRAVELER 004
	S A V MAY 2397
MCRAE'S POWER POINT 48M	STEVENSON BRUNO 561G
<b>MCRAE'S BRIDGET 125T</b>	MCRAE'S BRIDGET 19F
MCRAE'S BRIDGET 51N	F A R KRUGERRAND 410H
	MCRAE'S BRANDI 81C

CE: 0.0 BW: 4.1 WW: 48 YW: 98 MCE: 1.0 M: 17

2021 Calf: KOF 151J • Sired by Stevenson Turning Point • BW: 98 • WW: 703

## lot 8

### MAR MAC *Bridget* 75E

KOF 75E | 06/02/2017 | 1967874 | BW 72 | PARENT VERIFIED

MAR MAC TIGER 159Y	HF TIGER 5T
<b>MAR MAC TIGER 170A</b>	MCRAE'S BRIDGET 125T
GERLEI HEROINE 75Y	STUART DESTINATION 32S
	GERLEI HEROINE 27U
CONNELLY IMPRINT 8317	CONNELLY IMPRESSION
<b>MAR MAC BRIDGET 23A</b>	ELLINA OF CONANGA 868 7127
MCRAE'S BRIDGET 33U*	DMM MAKIN' WAVES 43M
	MCRAE'S BRIDGET 51N

CE: 10.0 BW: -0.8 WW: 32 YW: 54 MCE: 7.0 M: 24



This Tiger female out of the **BRIDGET COW FAMILY** is a powerful deep bodied female. We had the misfortune of losing a set of twins early on 75E, so she mothered the other bull calf twin of KOF 26D's, KOF 6J. If you want to add calving ease along with strong maternal strengths look at her EPD's. Her sons have made great heifer bulls for the commercial customers. Bred to Attractive this should make an interesting cross.

Owned by Gordon Resources

AI Bred April 28 to Schiefelbein  
Attractive 4565 -1938699-  
*In vet's opinion safe to AI*  
Exposed June 4-July 6 to  
Six Mile Horizon 163H -2164362-



SIRE | MAR MAC TIGER 170A

# Bridget Cow Family



Connealy Imprint left us some hard-working females. They put everything into their calves and this female does just that. Member of the **BRIDGET COW FAMILY**. She is the Dam of Lot 2, 8 & 10 and has sons working in commercial programs around Manitoba. This year she had a set of twin bull calves by KG Justified for our 2022 Bull Sale. Proven genetics here that work. She mothered the twins to weaning and bred back early that is what fertility is all about.

**AI Bred April 28 to**  
**SAV Renovation 6822-1963240-**  
*In vet's opinion safe to AI*  
 Exposed June 4-July 6 to  
 Merit Stoney Creek 7035E -1986184-



## lot 9

### MAR MAC *Bridget* 23A

KOF 23A | 29/01/2013 | 1734561 | **BW 85 | SIRE VERIFIED**

CONNEALY IMPRESSION  
**CONNEALY IMPRINT 8317**  
 ELLINA OF CONANGA 868 7127

DMM MAKIN' WAVES 43M  
**MCRAE'S BRIDGET 33U\***  
 MCRAE'S BRIDGET 51N

CONNEALY REFLECTION  
 PEARL PAMMY OF CONANGA 194  
 G A R GRID MAKER  
 ELIGENCE PLUS OF CONANGA  
 DMM MAKIN' WAVES 82K  
 DMM MISS ESSENCE 22K  
 F A R KRUGERRAND 410H  
 MCRAE'S BRANDI 81C

**CE: 5.0 BW: 2.5 WW: 41 YW: 75 MCE: 10.0 M: 18**

2021 Calf: KOF 43J & 44J • Sired by KG Justified 3023 • BW: 76 & 62 • WW: 631 & 612

## lot 10

### MAR MAC *Bridget* 150F

KOF 150F | 08/03/2018 | 2034223 | **BW 98 | PARENT VERIFIED**

COLE CREEK CEDAR RIDGE 1V  
**MAR MAC BLACK RIDGE 15B**  
 MCRAE'S BRIDGET 125T

CONNEALY IMPRINT 8317  
**MAR MAC BRIDGET 23A**  
 MCRAE'S BRIDGET 33U\*

COLE CREEK BLACK CEDAR 46P  
 COLE CREEK CLOVANADA 49S  
 MCRAE'S POWER POINT 48M  
 MCRAE'S BRIDGET 51N  
 CONNEALY IMPRESSION  
 ELLINA OF CONANGA 868 7127  
 DMM MAKIN' WAVES 43M  
 MCRAE'S BRIDGET 51N

**CE: 1.0 BW: 4.3 WW: 37 YW: 73 MCE: 5.0 M: 24**



Black Ridge left some very productive females that were moderate framed. 150F's dam, Lot 9 is a member of the **BRIDGET COW FAMILY**. This female had a set of twins this year and mothered the steer calf who weaned off at 640 lbs.

**Bred April 20 - Exposed July 6 to**  
**Six Mile Horizon 163H -2164362-**  
*In vet's opinion safe, due Mid February.*



# Bridget Cow Family



The **BRIDGET COW FAMILY** has many great descendants but Bridget 13B was one of the top producers over the years, her progeny are right near the top. This Innovation female is the dam of **LOT 12** and her son Mar Mac Finley 154H was a sale feature in our 2021 Bull Sale, selling to the Mann's family. 4D had a set of early dead twins and went dry this summer. This pedigree will add calving ease and milk to your program. She sells bred to Horizon and it will be very exciting to see this cross. Don't miss the chance to have a Horizon out of a proven female. Picture from 2020 while in production.

**Exposed April 20-July 6 to  
Six Mile Horizon 163H -2164362-  
Due mid February.**



DAM | MAR MAC BRIDGET 13B

## lot 11

### MAR MAC *Bridget* 4D

KOF 4D | 16/01/2016 | 1907934 | BW 74 | PARENT VERIFIED

CONNEALY IMPRESSION	CONNEALY REFLECTION
<b>MAR INNOVATION 251</b>	PEARL PAMMY OF CONANGA 194
MAR FINAL KAHUNA 856	S A V FINAL ANSWER 0035
	MAR KAHUNA PRECISION 328 674
COLE CREEK CEDAR RIDGE 1V	COLE CREEK BLACK CEDAR 46P
<b>MAR MAC BRIDGET 13B</b>	COLE CREEK CLOVANADA 49S
MCRAE'S BRIDGET 33U*	DMM MAKIN' WAVES 43M
	MCRAE'S BRIDGET 51N

**CE: 7.0 BW: 0.4 WW: 52 YW: 89 MCE: 11.0 M: 31**

2021 Calf: lost a set of early twins

## lot 12

### MAR MAC *Bridget* 169F

KOF 169F | 19/03/2018 | 2034229 | BW 78 | PARENT VERIFIED

COLE CREEK CEDAR RIDGE 1V	COLE CREEK BLACK CEDAR 46P
<b>MAR MAC BLACK RIDGE 15B</b>	COLE CREEK CLOVANADA 49S
MCRAE'S BRIDGET 125T	MCRAE'S POWER POINT 48M
	MCRAE'S BRIDGET 51N
MAR INNOVATION 251	CONNEALY IMPRESSION
<b>MAR MAC BRIDGET 4D</b>	MAR FINAL KAHUNA 856
MAR MAC BRIDGET 13B	COLE CREEK CEDAR RIDGE 1V
	MCRAE'S BRIDGET 33U*

**CE: 7.0 BW: 1.0 WW: 37 YW: 71 MCE: 9.0 M: 31**

2021 Calf: KOF 120J • Sired by Merit Stoney Creek 7035E • BW: 70 • WW: 672



This is one of the sleepers in the sale. A young March 3-year-old daughter of 4D out of the **BRIDGET COW FAMILY** and Black Ridge. Her daughter is one of the features and sells as **LOT 33** and her bull calf is a stand out in the bull pen selling in our 2022 Bull Sale.

This female is what the cow business is about young females that go out and work for you and bred back early to Attractive. Hold on this could be quite a calf!

**AI Bred April 28 to Schiefelbein  
Attractive 4565 -1938699-  
In vet's opinion safe to AI  
Exposed June 4-July 6 to  
Six Mile Horizon 163H -2164362-**



AGRIBITION | 40TH ANNIVERSARY



# Bridget Cow Family



A young Insight daughter with a great future ahead. Cornerglen Insight we purchased at the Right Cross Bull Sale, and he has left a strong set of maternal females, with nice tight udders. 2F is another daughter of the **BRIDGET COW FAMILY** going back to Bridget 13B. Lots of calving ease and milk in this pedigree. Her impressive daughters are **LOT 14A** and **LOT 35**.

Exposed April 20-July 6 to  
Six Mile Horizon 163H -2164362-  
Due mid February.



## lot 14

### MAR MAC *Bridget* 2F

KOF 2F | 20/01/2018 | 2034149 | BW 70 | PARENT VERIFIED

RCR INSIGHT 189Z  
CORNERGLEN INSIGHT 50C  
KDF BLACKCAP TIBBIE 63Y

COLE CREEK CEDAR RIDGE 1V  
MAR MAC BRIDGET 13B  
MCRAE'S BRIDGET 33U\*

CE: 12.0 BW: -1.8 WW: 27 YW: 51 MCE: 10.0 M: 30

MERIT 77X  
KDF RUBY 46T  
S A V NET WORTH 4200  
KDF DIVA 73N  
COLE CREEK BLACK CEDAR 46P  
COLE CREEK CLOVANADA 49S  
DMM MAKIN' WAVES 43M  
MCRAE'S BRIDGET 51N

## lot 14A

### MAR MAC *Bridget* 105J

KOF 105J | 06/02/2021 | 2204487 | BW 78 | WW 602 | PARENT VERIFIED

MERIT STONEY CREEK 4023  
MERIT STONEY CREEK 7035E  
MERIT BLACKLASS 1184

CORNERGLEN INSIGHT 50C  
MAR MAC BRIDGET 2F  
MAR MAC BRIDGET 13B

CE: 6.0 BW: 1.0 WW: 40 YW: 66 MCE: 11.0 M: 27

HF PROWLER 43U  
MERIT PRIDE 2010  
BEVERLY HILLS VISA 734  
MERIT BLACKLASS 5195  
RCR INSIGHT 189Z  
KDF BLACKCAP TIBBIE 63Y  
COLE CREEK CEDAR RIDGE 1V  
MCRAE'S BRIDGET 33U\*



A Stoney Creek daughter that will be a productive mother cow.

Pictured below is McRae's Direct Impact, semen sells!



# Bridget Cow Family



Another female who puts everything she has into her calves. Black Ridge x **BRIDGET COW FAMILY** are moderate framed, tight uddered females that bring in a top calf every year. 90D has a son working in a Community Pasture project, and daughters in Emma Fox and Ellie Nolan's program. Her 2021 bull calf a Basin Payweight 025S will be a sale feature in our 2022 Bull Sale. 90D will need a second look sale day after you see the tremendous job she has done in her lifetime. Bred to Cache, a performance sire that should work on this maternal female.

**AI Bred April 28 to High Point Cache 894 -2087914-**

*In vet's opinion safe to AI*

Exposed June 4-July 6 to Six Mile Horizon 163H -2164362-



DAUGHTER | MAR MAC 74H

## lot 15

### MAR MAC *Cassidy* 90D

KOF 90D | 08/02/2016 | 1907975 | PARENT VERIFIED

COLE CREEK CEDAR RIDGE 1V	COLE CREEK BLACK CEDAR 46P
<b>MAR MAC BLACK RIDGE 15B</b>	COLE CREEK CLOVANADA 49S
MCRAES BRIDGET 125T	MCRAE'S POWER POINT 48M
	MCRAE'S BRIDGET 51N
	EXAR MANNA 2466
JUSTAMERE 2466 TEMPO 192R	BRANDEIS ROSEBUD 6J
<b>MCRAE'S CASSIDY 111W</b>	STEVENSON BRUNO 561G
MCRAE'S CASSIDY 62P	MCRAE'S BRIDGET 19F

**CE: -3.0 BW: 4.8 WW: 37 YW: 77 MCE: 3.0 M: 27**

2021 Calf: KOF 39J • Sired by Basin Payweight 025S • BW: 86 • WW: 732

## lot 16

### MAR MAC *Brandi* 46F

KOF 46F | 02/02/2018 | 2040503 | BW 92 | PARENT VERIFIED

S A V REGISTRY 2831	RITO 707 OF IDEAL 3407 7075
<b>S A V SENSATION 5615</b>	S A V MADAME PRIDE 0075
S A V BLACKCAP MAY 4136	S A V 8180 TRAVELER 004
	S A V MAY 2397
	SITZ TRAVELER 8180
S A V FINAL ANSWER 0035	S A V EMULOUS 8145
<b>MCRAES BRANDI 9T</b>	STEVENSON FORTUNE 425C
MCRAE'S BRANDI 35G	MCRAE'S BRANDI 81C

**CE: -2.0 BW: 3.3 WW: 55 YW: 102 MCE: 1.0 M: 19**

2021 Calf: KOF 136J • Sired by Merit Stoney Creek 7035E • BW: 96 • WW: 684



If you want to add some frame and growth to your calves here is the female for you. 46F goes back to the **BRANDI COW FAMILY** who was the dam of the **BRIDGET COW FAMILY**. 9T was a Elite/Premier Dam since 2014 in the Canadian Angus Association Registry. Traveler 004, Final Answer and Fortune 425C all in one unique package. Her son Mar Mac Element 35H was a power bull who sold for \$6000 to Joe Bouchard in our 2021 Bull Sale. Her son, 136J out of Stoney Creek will sell in our 2022 Bull Sale. Bred to the calving ease sire Colossal should be an exciting mating.

**AI Bred April 28 to Musgrave 316 Colossal 137 -2021884-**

*In vet's opinion safe to AI*

Exposed June 4-July 6 to Six Mile Horizon 163H -2164362-



SON | MAR MAC ELEMENT 35H

# Annie K Cow Family



## lot 17

### BLAIR'S *Annie K* 336D

BBC 336D | 03/04/2016 | 2005344 | BW 78 | SIRE VERIFIED

LT DRIVEN 9087  
**MAR MAC BLUEPRINT 56B**  
 MAR MAC TIGER LILY 25Y

DUFF NEW GENERATION 6107  
**BLAIR'S ANNIE K 402A**  
 SASKALTA ANNIE K 713T

LT BANDWAGON 3105  
 LT ASHLEY 3087  
 HF TIGER 5T  
 MCRAE'S BRIDGET 33U\*  
 O C C GENESIS 872G  
 O C C DIXIE ERICA 814G  
 DOUBLE AA RITO 21'03  
 DOUBLE AA ANNIE K 381'02

CE: 3.0 BW: 2.1 WW: 39 YW: 64 MCE: 8.0 M: 16

2021 Calf: KOF 168J • Sired by KG Justified 3023 • BW: 72 • WW: 650

This moderate framed, easy keeping female of the ANNIE K COW FAMILY has left us a strong set of bred females you will admire in this sale. Check out her daughters, **LOT 18 AND 19**, they are right near the top. We feel that this cow family will become as influential as the Bridget Cow Family. A true herd building female here!

Her son from 2021 got injured so will not be in our 2022 Bull Sale.

Exposed April 20-July 6 to Six Mile Horizon 163H -2164362-  
 In vet's opinion safe to exposure. Due mid March.



#### SIRE | MAR MAC BLUE PRINT 56B

In our 2015 Mar Mac Bull Sale we sold the exciting young, Mar Mac Blueprint 56B (LT Driven x Bridget Cow Family) to Blair's Ag in Saskatchewan. We then purchased this Blueprint daughter from the Blair's Ag Female Sale and what a job she has done.



# Annie K Cow Family



This female has caught everyone's eye this summer. These Tomahawk females are really hard to part with as they are going to make fantastic mother cows and have loads of future in them. Take advantage of this opportunity as she could raise your next herd bull. She is out of the **ANNIE K COW FAMILY**, they moderate framed, thick made easy fleshing and feminine. Here is a female that is full of potential and take a look at her fancy Musgrave Stunner heifer calf. 97G is bred to the exciting new herdsire, Horizon. Should be an exciting cross.

Exposed April 20-July 6 to Six Mile  
Horizon 163H -2164362-  
Due mid February.



LOT 18 & 18A

## lot 18

### MAR MAC *Annie K* 97G

KOF 97G | 13/02/2019 | 2089614 | BW 84 | PARENT VERIFIED

HA COWBOY UP 5405  
HF TOMAHAWK 229E  
HF MAYFLOWER 191Z

MAR MAC BLUEPRINT 56B  
BLAIR'S ANNIE K 336D  
BLAIR'S ANNIE K 402A

CE: 2.0 BW: 2.7 WW: 44 YW: 84 MCE: 7.0 M: 20

HA OUTSIDE 3008  
HA BLACKCAP LADY 1602  
HF TIGER 5T  
HF MAYFLOWER 78P  
LT DRIVEN 9087  
MAR MAC TIGER LILY 25Y  
DUFF NEW GENERATION 6107  
SASKALTA ANNIE K 713T

## lot 18A

### MAR MAC *Annie K* 115J

KOF 115J | 08/02/2021 | 2204491 | BW 64 | WW 640 | PARENT VERIFIED

LD CAPITALIST 316  
MUSGRAVE 316 STUNNER  
MCATL BLACKBIRD 831-1378

HF TOMAHAWK 229E  
MAR MAC ANNIE K 97G  
BLAIR'S ANNIE K 336D

CE: 8.0 BW: 0.2 WW: 54 YW: 97 MCE: 6.0 M: 24

CONNELLY CAPITALIST 028  
LD DIXIE ERICA 2053  
MCATL PURE PRODUCT 903-55  
MCATL BLACKBIRD 1378-573  
HA COWBOY UP 5405  
HF MAYFLOWER 191Z  
MAR MAC BLUEPRINT 56B  
BLAIR'S ANNIE K 402A



Stunner was used in our program for calving heifers and did a great job at that. If you need a Junior Angus heifer for Showdown 2022 in Brandon, take a look at this thick made, excellent profile female. Annie K 115J was a member of our 2021 show team!



# Annie K Cow Family



Check out this young 3-year-old Tomahawk daughter out of the **ANNIE K COW FAMILY** with her picture perfect udder (*note calf had just sucked before this picture was taken*). Her yearling daughter sells as **LOT 34** and her 2021 thick stout made All Star heifer calf sells as **LOT 18A**. A young productive female with her whole life ahead of her bred to the exciting new young sire, Horizon. Productivity and exciting genetics!

**Exposed April 20-July 6 to Six Mile Horizon 163H -2164362-, observed bred on May 8 Due mid February.**



## lot 19

MAR MAC *Annie K* 72F

KOF 72F | 09/02/2018 | 2034190 | BW 74 | PARENT VERIFIED

BAR-H CROSSFIRE 63A  
SIX MILE DESERT STORM 94D  
SIX MILE FALLING STAR 219Y

MAR MAC BLUEPRINT 56B  
BLAIR'S ANNIE K 336D  
BLAIR'S ANNIE K 402A

CE: 7.0 BW: 1.0 WW: 42 YW: 78 MCE: 11.0 M: 17

S TITLST 1145  
HF TIBBIE 93U  
S A V HEAVY HITTER 6347  
ROSE HILL DARK STAR 22P  
LT DRIVEN 9087  
MAR MAC TIGER LILY 25Y  
DUFF NEW GENERATION 6107  
SASKALTA ANNIE K 713T

## lot 19A

MAR MAC *Annie K* 106J

KOF 106J | 07/02/2021 | 2212220 | BW 76 | WW 649 | PARENT VERIFIED

HF TOMAHAWK 229E  
MAR MAC ALL STAR 101G  
MAR MAC BRIDGET 58D

SIX MILE DESERT STORM 94D  
MAR MAC ANNIE K 72F  
BLAIR'S ANNIE K 336D

CE: 6.0 BW: 1.7 WW: 48 YW: 92 MCE: 8.0 M: 19

HA COWBOY UP 5405  
HF MAYFLOWER 191Z  
S A V RESOURCE 1441  
MCRAES BRIDGET 125T  
BAR-H CROSSFIRE 63A  
SIX MILE FALLING STAR 219Y  
MAR MAC BLUEPRINT 56B  
BLAIR'S ANNIE K 402A



This fancy thick made female is a daughter of Mar Mac All Star 101G, a Tomahawk son out of 58D. Lots of potential here.



# Aleta Cow Family



**lot 20**

**MAR MAC Aleta 26D**

KOF 26D | 28/02/2016 | 1933289 | BW 78 | SIRE VERIFIED

TURIHAUA TEXAN B141  
**TURIHAUA REX E297**  
 TURIHAUA B48

HINGAIA 121  
 TURIHAUA P43  
 TURIHAUA BRODY Z277  
 TURIHAUA Z48  
 WEDDERLIE EVICTOR  
 CHAMPAGNE CHERRY BEE B117  
 BUSHS GRAND DESIGN  
 BROOKMORE ALETA 60N

DUNLOUISE COMMANDER BOND  
**BROOKMORE ALETA 131X**  
 BROOKMORE ALETA 12R

**CE: 0.0 BW: 2.1 WW: 42 YW: 62 MCE: 4.0 M: 12**

2021 Calf: KOF 5J & 6J • Sired by Musgrave 316 Stunner • BW: 68 & 62 • WW: 693 & 596

Looking for some outcross genetics, here are some Scottish, New Zealand and Canadian genetics all in one female. Out of the **ALETA COW FAMILY**. Her progeny speaks for themselves a productive daughter sells as **LOT 21**, a Finley son 19H we used in our program in 2021 and her twin bull calves sired by Musgrave Stunner will sell in our 2022 Bull Sale. Bred back to Musgrave Stunner for a proven mating.

**AI Bred April 28 to Musgrave 316 Stunner -1995252-**

*In vet's opinion safe to AI*

Exposed June 4-July 6 to Merit Stoney Creek 7035E -1986184--



**DAM | BROOKMORE ALETA 131X**

We purchased the Aleta cow family from Brookmore Angus. She was a Dunlouise Commander Bond (Scottish bred pedigree) and out of the Brookmore Aleta cow family. A very productive cow family.



# Aleta Cow Family



Wow look at the heifer calf this two year old has produced! A Tomahawk female with tons of potential, deep bodied, excellent udder and did an amazing job on her first heifer calf. A daughter of the Aleta cow family who always adds some performance to their offspring. Bred to SAV Rainfall this should be an exciting mating.

AI Bred April 28 to SAV Rainfall 6848 -2013656-

In vet's opinion safe to AI  
Exposed June 4-July 6 to  
Six Mile Horizon 163H -2164362-



## lot 21

### MAR MAC *Aleta* 144G

KOF 144G | 10/03/2019 | 2089572 | BW 90 | PARENT VERIFIED

HA COWBOY UP 5405  
**HF TOMAHAWK 229E**  
 HF MAYFLOWER 191Z

TURIHAUA REX E297  
**MAR MAC ALETA 26D**  
 BROOKMORE ALETA 131X

HA OUTSIDE 3008  
 HA BLACKCAP LADY 1602  
 HF TIGER 5T  
 HF MAYFLOWER 78P  
 TURIHAUA TEXAN B141  
 TURIHAUA B48  
 DUNLOUISE COMMANDER BOND  
 BROOKMORE ALETA 12R

CE: -3.0 BW: 3.8 WW: 53 YW: 95 MCE: 2.0 M: 18

## lot 21A

### MAR MAC *Aleta* 26J

KOF 26J | 23/01/2021 | 2204477 | BW 84 | WW 740 | PARENT VERIFIED

MERIT STONEY CREEK 4023  
**MERIT STONEY CREEK 7035E**  
 MERIT BLACKLASS 1184

HF TOMAHAWK 229E  
**MAR MAC ALETA 144G**  
 MAR MAC ALETA 26D

HF PROWLER 43U  
 MERIT PRIDE 2010  
 BEVERLY HILLS VISA 734  
 MERIT BLACKLASS 5195  
 HA COWBOY UP 5405  
 MAR MAC ALETA 144G  
 TURIHAUA REX E297  
 BROOKMORE ALETA 131X

CE: -3.0 BW: 4.5 WW: 54 YW: 90 MCE: 6 M: 21



Showdown 2022 Show Prospect! 26J might just be the best heifer calf we have raised at Mar Mac! Brett McRae purchased Stoney Creek from the Merit program and what a tremendous job he has done. This thick made, fancy female will be on the show team 2022 and we are excited to see what her future brings. She is an eye appealing impressive female.



AG EX 2021 | SENIOR HEIFER CALF CHAMPION

# Aleta Cow Family



**ALETA COW FAMILY.** The heifer calf on this cow female has been a favorite at Mar Mac Farms since birth. Cornerglen Insight left a strong set of maternal females at Mar Mac. Deep bodied, moderate framed, easy fleshing and a beautiful udders. Bred to Rainfall should be exciting mating.

**AI Bred April 28 to SAV Rainfall 6848 -2013656**

*In vet's opinion safe to AI*  
Exposed June 4-July 6 to  
Six Mile Horizon 163H -2164362-



## lot 22

### MAR MAC *Aleta* 54F

KOF 54F | 05/02/2018 | 2034180 | **BW 94** | **SIRE VERIFIED**

RCR INSIGHT 189Z  
**CORNERGLEN INSIGHT 50C**  
KDF BLACKCAP TIBBIE 63Y

DUNLOUISE COMMANDER BOND  
**BROOKMORE ALETA 131X**  
BROOKMORE ALETA 12R

MERIT 77X  
KDF RUBY 46T  
S A V NET WORTH 4200  
KDF DIVA 73N  
WEDDERLIE EVICTOR  
CHAMPAGNE CHERRY BEE B117  
BUSHS GRAND DESIGN  
BROOKMORE ALETA 60N

**CE: -3.0 BW: 4.3 WW: 23 YW: 44 MCE: 3.0 M: 26**

## lot 22A

### MAR MAC *Aleta* 55J

KOF 55J | 28/01/2021 | 2212224 | **BW 84** | **PARENT VERIFIED**

HF TOMAHAWK 229E  
**MAR MAC ALL STAR 101G**  
MAR MAC BRIDGET 58D

CORNERGLEN INSIGHT 50C  
**MAR MAC ALETA 54F**  
BROOKMORE ALETA 131X

HA COWBOY UP 5405  
HF MAYFLOWER 191Z  
S A V RESOURCE 1441  
MCRAES BRIDGET 125T  
RCR INSIGHT 189Z  
KDF BLACKCAP TIBBIE 63Y  
DUNLOUISE COMMANDER BOND  
BROOKMORE ALETA 12R

**CE: -1.0 BW: 4.1 WW: 40 YW: 77 MCE: 3.0 M: 23**



Showdown 2022 Show prospect!  
Second in class at 2021 Ag Ex.  
A heifer calf that would work good  
as a Junior project or make a  
stout mother cow with the Tomahawk  
and Bridget cross on the sire's side.





# Aleta Cow Family



Want to add some frame and performance to your cowherd, 117G will do that along with the maternal strength of the **ALETA COW FAMILY**. We bred her to Renovation to add natural thickness along with her performance.

AI Bred April 28 to SAV Renovation  
6822 -1963240-

*In vet's opinion safe to AI*

Exposed June 4-July 6 to  
Six Mile Horizon 163H -2164362-



## lot 23

MAR MAC *Aleta* 117G

KOF 117G | 21/02/2019 | 2089270 | BW 90 | SIRE VERIFIED

RCR INSIGHT 189Z  
CORNERGLEN INSIGHT 50C  
KDF BLACKCAP TIBBIE 63Y

DUNLOUISE COMMANDER BOND  
BROOKMORE ALETA 131X  
BROOKMORE ALETA 12R

CE: -3.0 BW: 3.7 WW: 37 YW: 62 MCE: 4.0 M: 23

MERIT 77X  
KDF RUBY 46T  
S A V NET WORTH 4200  
KDF DIVA 73N  
WEDDERLIE EVICTOR  
CHAMPAGNE CHERRY BEE B117  
BUSHES GRAND DESIGN  
BROOKMORE ALETA 60N

## lot 23A

MAR MAC *Aleta* 28J

KOF 28J | 23/01/2021 | 2204479 | BW 82 | WW 616 | PARENT VERIFIED

MERIT STONEY CREEK 4023  
MERIT STONEY CREEK 7035E  
MERIT BLACKLASS 1184

CORNERGLEN INSIGHT 50C  
MAR MAC ALETA 117G  
BROOKMORE ALETA 131X

CE: -3.0 BW: 4.5 WW: 46 YW: 74 MCE: 7.0 M: 24

HF PROWLER 43U  
MERIT PRIDE 2010  
BEVERLY HILLS VISA 734  
MERIT BLACKLASS 5195  
RCR INSIGHT 189Z  
KDF BLACKCAP TIBBIE 63Y  
DUNLOUISE COMMANDER BOND  
BROOKMORE ALETA 12R



These Stoney Creek x **ALETA COW FAMILY** females will make mother cows down the road.



# Annie K Cow Family



An ANNIE K female that has worked in our program, check out her daughters **LOT 24A, LOT 25 and LOT 26.** Cows that work, bring in a stout calf in the fall and breed back.

AI Bred April 28 to Schiefelbein Attractive 4565 -1938699-  
In vet's opinion safe to AI  
Exposed June 4-July 6 to Merit Stoney Creek 7035E -1986184-

## VALLEY BLOSSOM ANNIE K COW FAMILY

Blair and I headed to our good friends, Bob and Gail Switzer's (Sandy Bar Ranch) Herd Reduction Sale and brought home this proven female and boy what a job she did at Mar Mac.

## lot 24 VALLEY BLOSSOM Annie K 224Y

IJP 224Y | 16/02/2011 | 1636367 | BW 70 | PERMANENT TYPED DNA

SANDY BAR IDEAL 19S  
SANDY BAR IDEAL 19S 185W  
SANDY BAR ANNIE K 62T

SVR HUSSLER 320T  
SANDY BAR ANNIE K 36W  
SANDY BAR ANNIE K 41S

CE: 7.0 BW: 1.1 WW: 34 YW: 59 MCE: 8.0 M: 28

PRAIRIELANE IDEAL 7451-2014  
RON'S DELIA 22H  
VALLEY BLOSSOM LIGHTENING 706P  
SANDY BAR ANNIE K 78K  
CRESCENT CREEK 235 TRAV 65R  
SVR FOREVER LADY 248M  
LLB 5175 BANDO 190P  
SANDY BAR ANNIE K 24N

## lot 24A MAR MAC Annie K 102J

KOF 102J | 06/02/2021 | 2205310 | BW 96 | WW 710 | PARENT VERIFIED

MERIT STONEY CREEK 4023  
MERIT STONEY CREEK 7035E  
MERIT BLACKLASS 1184

SANDY BAR IDEAL 19S 185W  
VALLEY BLOSSOM ANNIE K 224Y  
SANDY BAR ANNIE K 36W

CE: -1.0 BW: 4.2 WW: 46 YW: 75 MCE: 8.0 M: 26

HF PROWLER 43U  
MERIT PRIDE 2010  
BEVERLY HILLS VISA 734  
MERIT BLACKLASS 5195  
SANDY BAR IDEAL 19S  
SANDY BAR ANNIE K 62T  
SVR HUSSLER 320T  
SANDY BAR ANNIE K 41S



She may be a little short on ears but here is a hairy, thick made Stoney Creek female who will be an asset to any program.



LOT 24 WITH 2019 CALF

# Annie K Cow Family



A daughter of the **ANNIE K COW FAMILY**, this young 3-year-old out of the Insight son we purchased from the Cornerglen program. Her 4M Element daughter sells as **LOT 37** and she has a stout thick made Stoney Creek son selling in our 2022 Bull Sale. A deep, excellent uddered female who has lots of future ahead of her.

AI Bred April 28 to  
**SAV Rainfall 6848 -2013656 -**  
*In vet's opinion safe to AI*  
 Exposed June 4-July 6 to  
 Six Mile Horizon 163H -2164362-



## lot 25

### MAR MAC *Annie* 71F

KOF 71F | 08/02/2018 | 2034185 | **BW 88** | PARENT VERIFIED

RCR INSIGHT 189Z  
**CORNERGLEN INSIGHT 50C**  
 KDF BLACKCAP TIBBIE 63Y

SANDY BAR IDEAL 19S 185W  
**VALLEY BLOSSOM ANNIE K 224Y**  
 SANDY BAR ANNIE K 36W

MERIT 77X  
 KDF RUBY 46T  
 S A V NET WORTH 4200  
 KDF DIVA 73N  
 SANDY BAR IDEAL 19S  
 SANDY BAR ANNIE K 62T  
 SVR HUSSLER 320T  
 SANDY BAR ANNIE K 41S

**CE: 6.0 BW: 1.1 WW: 31 YW: 55 MCE: 9.0 M: 29**

2021 Calf: KOF 141J • Sired by Merit Stoney Creek 7035E • BW: 80 • WW: 623



## 2021 Farm Family of the Year



## Testimonial...

The Kristina Cow Family legacy began at Mar Mac with the purchase from Blair & Lois McRae. It seems like yesterday, that we had the good fortune to purchase McRae's Kristina 79T, who was the beginning and matriarch of many success stories for us at Young Dale Angus. McRae's Kristina 79T produced a herd bull as a two year old heifer. Her Calf Young Dale Goliath 71W sold at Agribition to Bob Switzer of Sandy Bar Angus for a whopping \$10,000.00. Definitely a high seller for us at Young Dale way back in 1987. Willie Robertson of Nightingale Angus of England saw Kristina 79T at our place and was very impressed, he said I think I have just seen the best looking Angus cow I have never had the chance to see! The Kristina's have evolved into many top producing cows for use at Young Dale Angus. The Kristina 24W raised 16 calves in her years 18 years of production. She sold here for \$4,000 at 6 years of age, then sold for \$5,000 at 15 years old., at the Sandy Bar Angus mature cow herd Dispersal. The Kristina cow family have stood the test of time in top end production. They pay dividends that put front end pasture cattle in any herd that is fortunate enough to own one. Thank you Blair and Lois.

**BARRY YOUNG | YOUNGDALE ANGUS**

# Annie Cow Family



**lot 26**

MAR MAC *Annie* 135G

KOF 135G | 04/03/2019 | 2089277 | BW 90 | PARENT VERIFIED

HA COWBOY UP 5405  
HF TOMAHAWK 229E  
HF MAYFLOWER 191Z

HA OUTSIDE 3008  
HA BLACKCAP LADY 1602  
HF TIGER 5T  
HF MAYFLOWER 78P  
SANDY BAR IDEAL 19S  
SANDY BAR ANNIE K 62T  
SVR HUSSLER 320T  
SANDY BAR ANNIE K 41S

SANDY BAR IDEAL 19S 185W  
VALLEY BLOSSOM ANNIE K 224Y  
SANDY BAR ANNIE K 36W

CE: 2.0 BW: 2.8 WW: 54 YW: 99 MCE: 4.0 M: 26

2021 Calf: KOF 66J • Sired by Musgrave 316 Stunner • BW: 88 • WW: 706

You will drive a lot of miles to find a 2-year-old with this volume, performance and eye appeal.

**THE ANNIE COW K FAMILY** from Sandy Bar has proven genetics all the way back. HF Tomahawk females are females you can start a program with. Tomahawk's dam is also the dam of HF Alcatraz, so lots of maternal strength in this young 2-year-old. Check out her EPD's! When you find this kind of female gather up as many as you can. Her first calf is a bull calf KOF 66J a son of Musgrave Stunner that will be in the top end of our bull sale in March. He weaned off at 706 lbs. She sells bred to S A V Rainfall so this could be a winning combination.

AI Bred April 28 to S A V Rainfall 6848-2013656 -

*In vet's opinion safe to AI*

Exposed June 4-July 6 to Six Mile Horizon 163H -2164362-



SIRE | HF TOMAHAWK 229E



SON | MAR MAC STUNNER 66J



LOT 26

# Sally Cow Family



66G is Tomahawk is out of the **SARAH COW FAMILY** x Final Answer. Her dam 91Y, is a Elite female in the Canadian Angus Premier / Elite Dam Program, we sold this spring due to her age. Her half sister is **LOT 40** in the heifer calf division. 66G has a strong set of EPD's across the board and has loads of maternal strength. Her heifer calf sells in the sale today as **LOT 27A**. Bred to Horizon, this young herdsire has lots of potential, so you can be one of the first people to have progeny off this up and coming herdsire!

AI Bred April 28 to  
SA V Renovation -1963240-  
**Exposed May 18-July 6 to Six Mile  
Horizon 163H -2164362-**  
*Safe to exposure in vet's opinion  
Due mid March.*



## lot 27

### MAR MAC *Sally* 66G

KOF 66G | 05/02/2019 | 2089273 | **BW 90** | PARENT VERIFIED

HA COWBOY UP 5405  
**HF TOMAHAWK 229E**  
HF MAYFLOWER 191Z

S A V FINAL ANSWER 0035  
**MAR MAC SALLY 91Y**  
MCRAE'S SARAH 131W

HA OUTSIDE 3008  
HA BLACKCAP LADY 1602  
HF TIGER 5T  
HF MAYFLOWER 78P  
SITZ TRAVELER 8180  
S A V EMULOUS 8145  
JUSTAMERE 2466 TEMPO 192R  
MCRAE'S SARAH 24L

**CE: 4.0 BW: 1.9 WW: 53 YW: 100 MCE: 5.0 M: 29**

## lot 27A

### MAR MAC *Sally* 144J

KOF 144J | 16/02/2021 | 2204498 | **BW 76** | **WW 605** | PARENT VERIFIED

MERIT STONEY CREEK 4023  
**MERIT STONEY CREEK 7035E**  
MERIT BLACKCLASS 1184

HF TOMAHAWK 229E  
**MAR MAC SALLY 66G**  
MAR MAC SALLY 91Y

HF PROWLER 43U  
MERIT PRIDE 2010  
BEVERLY HILLS VISA 734  
MERIT BLACKCLASS 5195  
HA COWBOY UP 5405  
HF MAYFLOWER 191Z  
S A V FINAL ANSWER 0035  
MCRAE'S SARAH 131W

**CE: 3.0 BW: 2.4 WW: 52 YW: 89 MCE: 8.0 M: 27**



A fancy female here with Proven genetics from the **SARAH COW FAMILY** and Stoney Creek.

Pictured below a Sarah Cow Family descendant working for Perrot Cattle Co.



SARAH DAUGHTER AT PERROT CATTLE CO.



We purchased this female in the Keystone Classic Sale from Raymond and Barb Airey. This broody female is tested homozygous black. Bred to Musgrave Colossal should be an exciting combination.

**AI Bred April 28 to Musgrave Colossal 137**

**-2021884-**

*In vet's opinion safe to AI*  
Exposed June 4-July 6 to Six Mile  
Horizon 163H -2164362-



## lot 28

### ARY *Countess* 806F

ARY 806F | 15/01/2018 | 2022321 | **BW 86** | SIRE VERIFIED | HOMO BLACK

R B ACTIVE DUTY 0010X  
**S7R SUPER DUTY 23C**  
CIRCLE D 2154 ERROLINE 1T

MAR MAC BLACKBERRY 155X  
**MAR MAC COUNTESS 70Z**  
RED MCRAE'S COUNTESS 5U\*

**CE: -1.0 BW: 2.6 WW: 47 YW: 84 MCE: 4.0 M: 21**

LCC NEW STANDARD  
B A LADY 6807 305  
RR 7407 RAINMAKER 2154  
LLB LADY ERROLINE 231N  
RED MCRAES VISION 65T  
MCRAES BRIDGET 125T  
RED JB MOHICAN 5001  
RED JCC COUNTESS 73J

## lot 28A

### MAR MAC *Countess* 112J

KOF 112J | 08/02/2021 | 2204489 | **BW 88** | WW 590 | PARENT VERIFIED

MERIT STONEY CREEK 4023  
**MERIT STONEY CREEK 7035E**  
MERIT BLACKLASS 1184

S7R SUPER DUTY 23C  
**ARY COUNTESS 806F**  
MAR MAC COUNTESS 70Z

**CE: -3.0 BW: 4.1 WW: 51 YW: 85 MCE: 7.0 M: 23**

HF PROWLER 43U  
MERIT PRIDE 2010  
BEVERLY HILLS VISA 734  
MERIT BLACKLASS 5195  
R B ACTIVE DUTY 0010X  
CIRCLE D 2154 ERROLINE 1T  
MAR MAC BLACKBERRY 155X  
RED MCRAE'S COUNTESS 5U\*



A Stoney Creek female with a balanced set of EPD's.





**lot 29** NORTHERN VIEW *Rosebud* 83E

AJF 83E | 05/01/2017 | 1975220 | BW 70 | PERMANENT TYPED

VISIONTOPLINE ROYAL STOCKMAN  
**VISION UNANIMOUS 1418**  
 VISION EDELLA 665

GAMBLES ROYAL FLUSH  
 LAGRAND PRIDE 7140  
 BOYD ON TARGET 1083  
 VISION EDELLA 337  
 BELL NET RETURN 3U  
 NORTHERN VIEW NET WORTH 104Y  
**NORTHERN VIEW ROSEBUD 83B**  
 PRAIRIELANE 8127 ROSEBUD 1035

NORTHERN VIEW TIBBIE 71R  
 PRAIRIELANE 5057-8127  
 PRAIRIELANE 3011 ROSEBUD 8028

CE: 5.0 BW: 1.1 WW: 57 YW: 109 MCE: 7.0 M: 19

A Vision Unanimous daughter that we purchased in the Keystone Classic Sale from Northern View. An easy keeping female that had a set of twins this year. She sells bred to the new Horizon bull so should be a stout calf.

**Exposed April 20-July 6 to Six Mile Horizon 163H -2164362-**  
*Safe to exposure in vet's opinion. Due late March.*



**lot 30** OSSAWA *Rachel* 255G

OAM 255G | 09/02/2019 | 2088284 | BW 80 | SIRE VERIFIED

NYK GRACELAND 39B  
**NYK PROMISED LAND 6E**  
 N7'S EVA MARIAS 12A

JINDRA DOUBLE VISION  
**OSSAWA JENNA 878C**  
 OSSAWA GRACIE 783A

N7'S ELVIS 9Y  
 SOO LINE GEORGINA 1101  
 BELVIN TRES MARIAS PATRON 205  
 MVF MISS EVA 195S  
 CONNEALY REFLECTION  
 HOFF RACHEL 8312 405  
 CFS LUKE 75X  
 OSSAWA JANICE 151K

CE: -1.0 BW: 3.4 WW: 56 YW: 102 MCE: 8.0 M: 22

We purchased this young female from Kathleen and Elaine Keen-Porteous and she sells along with her heifer calf by the Tomahawk son All Star.

**Exposed April 20-July 6 to Six Mile Horizon 163H -2164362-**  
*Safe to exposure in vet's opinion. Due mid February.*



**lot 30A** MAR MAC *Rachel* 183J

KOF 183J | 17/03/2021 | 2204738 | BW 78 | WW 610

HF TOMAHAWK 229E  
**MAR MAC ALL STAR 101G**  
 MAR MAC BRIDGET 58D

NYK PROMISED LAND 6E  
**OSSAWA RACHEL 255G**  
 OSSAWA JENNA 878C

HA COWBOY UP 5405  
 HF MAYFLOWER 191Z  
 S A V RESOURCE 1441  
 MCRAES BRIDGET 125T  
 NYK GRACELAND 39B  
 N7'S EVA MARIAS 12A  
 JINDRA DOUBLE VISION  
 OSSAWA GRACIE 783A

CE: 0.0 BW: 3.6 WW: 56 YW: 106 MCE: 5.0 M: 21

A fancy young Tomahawk grand daughter with lots of length.  
 Look, only a March 17 birthdate!



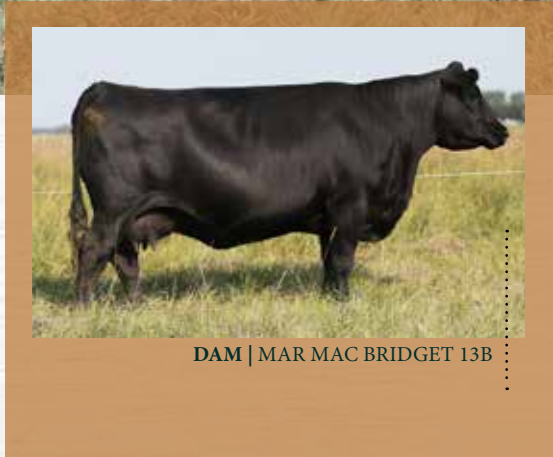
**lot31**

MAR MAC *Bridget* 41H

KOF 41H | 29/01/2020 | 2140106 | BW 84 | PARENT VERIFIED

- |                               |                            |
|-------------------------------|----------------------------|
| YOUNG DALE HI DEFINITION 185B | PF HOOVER DAM 041          |
| <b>YOUNG DALE FINLEY 90F</b>  | BLACK HAMCO COUNTESS 417T  |
| YOUNG DALE ELBA 24W           | RDDA OVERLOAD 2437R        |
|                               | YOUNG DALE ELBA 23N        |
|                               | COLE CREEK BLACK CEDAR 46P |
| COLE CREEK CEDAR RIDGE 1V     | COLE CREEK CLOVANADA 49S   |
| <b>MAR MAC BRIDGET 13B</b>    | DMM MAKIN' WAVES 43M       |
| MCRAE'S BRIDGET 33U*          | MCRAE'S BRIDGET 51N        |

**CE: 7.0 BW: 1.2 WW: 45 YW: 83 MCE: 9.0 M: 24**



DAM | MAR MAC BRIDGET 13B

Youngdale Finley left us a strong set of bulls in the 2021 Bull Sale and this Finley daughter is right near the top in the heifer pen. Her dam, 13B a member of the **BRIDGET COW FAMILY** left some exceptional progeny like **LOT 11**. 13B's 2021 son is at the top end of the bull pen for our 2022 Bull Sale. 41H is a female with femininity, length and maternal strength and bred to the calving ease sire, S A V Rainfall. A real cow maker prospect here.

**AI Bred April 28 to S A V Rainfall 6848 -2013656-**  
*In vet's opinion safe to AI*  
**NO EXPOSURE**







**BRIDGET COW FAMILY** X Turihaua Rex and Finley. Some outcross genetics here and bred to the exciting new Showman son, Horizon.

Exposed April 20-July 6 to Six Mile Horizon 163H -2164362-  
Safe to exposure in vet's opinion.  
Due early March.



GRAND SIRE | TURIHAUA REX

**lot32**

MAR MAC *Brand* 144H

KOF 144H | 07/03/2020 | 2141411 | BW 84 | PARENT VERIFIED

- |                               |                           |
|-------------------------------|---------------------------|
| YOUNG DALE HI DEFINITION 185B | PF HOOVER DAM 041         |
| <b>YOUNG DALE FINLEY 90F</b>  | BLACK HAMCO COUNTESS 417T |
| YOUNG DALE ELBA 24W           | RDDA OVERLOAD 2437R       |
|                               | YOUNG DALE ELBA 23N       |
|                               | TURIHAUA TEXAN B141       |
| TURIHAUA REX E297             | TURIHAUA B48              |
| <b>MAR MAC BRIDGET 28C</b>    | MCRAE'S POWER POINT 48M   |
| MCRAES BRIDGET 125T           | MCRAE'S BRIDGET 51N       |

CE: 0.0 BW: 3.6 WW: 37 YW: 69 MCE: 6.0 M: 16

**lot33**

MAR MAC *Bridget* 2H

KOF 2H | 15/01/2020 | 2140082 | BW 72 | PARENT VERIFIED

- |                             |                           |
|-----------------------------|---------------------------|
| KM BROKEN BOW 002           | SUMMITCREST COMPLETE 1P55 |
| <b>VARILEK GEDDES 7068</b>  | SUMMITCREST PRINCESS 0P12 |
| VARILEK GOLDIE 5051 506     | VARILEK CONFIDENCE 3004 0 |
|                             | VARILEK GOLDIE 3228 314   |
|                             | COLE CREEK CEDAR RIDGE 1V |
| MAR MAC BLACK RIDGE 15B     | MCRAES BRIDGET 125T       |
| <b>MAR MAC BRIDGET 169F</b> | MAR INNOVATION 251        |
| MAR MAC BRIDGET 4D          | MAR MAC BRIDGET 13B       |

CE: 9.0 BW: 0.5 WW: 58 YW: 101 MCE: 10.0 M: 29



**BRIDGET COW FAMILY** and outcross sire Geddes. This yearling heifer is out of a really productive female in our sale offering **LOT 12**. Lots of maternal strength in this pedigree. Bred early to the calving ease bull Colossal, so very marketable offspring to come.

AI Bred April 28 to  
MUSGRAVE 316 COLOSSAL 137  
-2021884-

In vet's opinion safe to AI  
NO EXPOSURE



KEYSTONE KLASIK 25TH ANNIVERSARY



Her dam LOT 19 is one of the featured 3-year-olds in the sale. A moderate framed easy keeping female from the **ANNIE K FAMILY**. This Stoney Creek female sells bred to Colossal the calving ease sire.

**AI Bred April 28 to  
Musgrave Colossal 137 -2021884-  
In vet's opinion safe to AI  
NO EXPOSURE**



DAM | MAR MAC ANNIE K 72F

**lot34**

MAR MAC *Annie K* 5H

KOF 5H | 17/01/2020 | 2140085 | BW 66 | PARENT VERIFIED

- |                                 |                            |
|---------------------------------|----------------------------|
| MERIT STONEY CREEK 4023         | HF PROWLER 43U             |
| <b>MERIT STONEY CREEK 7035E</b> | MERIT PRIDE 2010           |
| MERIT BLACKCLASS 1184           | BEVERLY HILLS VISA 734     |
|                                 | MERIT BLACKCLASS 5195      |
|                                 | BAR-H CROSSFIRE 63A        |
| SIX MILE DESERT STORM 94D       | SIX MILE FALLING STAR 219Y |
| <b>MAR MAC ANNIE K 72F</b>      | MAR MAC BLUEPRINT 56B      |
| BLAIR'S ANNIE K 336D            | BLAIR'S ANNIE K 402A       |

CE: 7.0 BW: 0.8 WW: 44 YW: 73 MCE: 12.0 M: 21

**lot35**

MAR MAC *Bridget* 24H

KOF 24H | 25/01/2020 | 2140097 | BW 68 | PARENT VERIFIED

- |                                 |                           |
|---------------------------------|---------------------------|
| MERIT STONEY CREEK 4023         | HF PROWLER 43U            |
| <b>MERIT STONEY CREEK 7035E</b> | MERIT PRIDE 2010          |
| MERIT BLACKCLASS 1184           | BEVERLY HILLS VISA 734    |
|                                 | MERIT BLACKCLASS 5195     |
|                                 | RCR INSIGHT 189Z          |
| CORNERGLEN INSIGHT 50C          | KDF BLACKCAP TIBBIE 63Y   |
| <b>MAR MAC BRIDGET 2F</b>       | COLE CREEK CEDAR RIDGE 1V |
| MAR MAC BRIDGET 13B             | MCRAE'S BRIDGET 33U*      |

CE: 9.0 BW: -0.1 WW: 41 YW: 66 MCE: 12.0 M: 27



The Stoney Creek x **BRIDGET COW FAMILY** left some females that will add milk and calving ease to your program. Bred to the young sire Horizon. Dam sells as LOT 14.

**Exposed April 20-July 6 to Six Mile  
Horizon 163H -2164362-  
Safe to exposure in vet's opinion.  
Due early February.**



DAM | MAR MAC BRIDGET 2F



You will not miss this heifer sale day a growthy Stoney Creek daughter out of the productive Lot 3- LT Driven female. Going back to the **BRIDGET COW FAMILY**. This female bred to Rainfall should be an exciting cross. Check her out sale day!!!

**AI Bred May 3 to  
SAV Rainfall 6848 -2013656-**  
*In vet's opinion safe to AI*  
**NO EXPOSURE**



**DAM | MAR MAC LILY 78C**

## lot36

### MAR MAC *Lily* 169H

KOF 169H | 21/03/2020 | 2141426 | **BW 104** | PARENT VERIFIED

MERIT STONEY CREEK 4023  
**MERIT STONEY CREEK 7035E**  
MERIT BLACKLASS 1184

LT DRIVEN 9087  
**MAR MAC LILY 78C**  
MAR MAC TIGER LILY 25Y

HF PROWLER 43U  
MERIT PRIDE 2010  
BEVERLY HILLS VISA 734  
MERIT BLACKLASS 5195  
LT BANDWAGON 3105  
LT ASHLEY 3087  
HF TIGER 5T  
MCRAE'S BRIDGET 33U\*

**CE: -7.0 BW: 5.9 WW: 58 YW: 95 MCE: 3.0 M: 25**

## lot37

### MAR MAC *Annie* 77H

KOF 77H | 10/02/2020 | 2141665 | **BW 60** | PARENT VERIFIED

POSS ELEMENT 215  
**4M ELEMENT 405**  
4M BLACKBIRD 2004

CORNERGLEN INSIGHT 50C  
**MAR MAC ANNIE 71F**  
VALLEY BLOSSOM ANNIE K 224Y

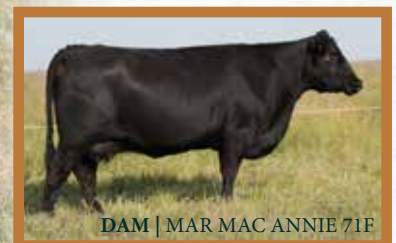
POSS EASY IMPACT 0119  
POSS ERICA 004  
SITZ UPWARD 307R  
RIVERBEND BLACKBIRD 4301  
RCR INSIGHT 189Z  
KDF BLACKCAP TIBBIE 63Y  
SANDY BAR IDEAL 19S 185W  
SANDY BAR ANNIE K 36W

**CE: 12.0 BW: -1.3 WW: 48 YW: 81 MCE: 13.0 M: 25**



4M Element was used in our program for calving ease. This female exhibits calving ease and growth. Her dam is the productive young female Lot 25 from the **ANNIE COW FAMILY**. She sells bred to the Semex thick meaty sire who is leaving some exceptional progeny.

**AI Bred April 28 to  
Musgrave 316 Colossal 137 -2021884-**  
*In vet's opinion safe to AI*  
Exposed May 24-July 6 to  
Six Mile Horizon 163H -2164362-



**DAM | MAR MAC ANNIE 71F**



A growthy Geddes daughter whose dam is LOT 7, out of the BRIDGET COW FAMILY bred early to Colossal.

AI Bred April 28 to  
Musgrave Colossal 137 -2021884-  
*In vet's opinion safe to AI*  
Exposed June 4-July 6 to Six Mile  
Horizon 163H -2164362-



DAM | MAR MAC BRIDGET 52B

**lot38**

MAR MAC *Bridget* 31H

KOF 31H | 26/01/2020 | 2141659 | BW 86 | PARENT VERIFIED

KM BROKEN BOW 002  
VARILEK GEDDES 7068  
VARILEK GOLDIE 5051 506

S A V RESOURCE 1441  
MAR MAC BRIDGET 52B  
MCRAES BRIDGET 125T

SUMMITCREST COMPLETE 1P55  
SUMMITCREST PRINCESS 0P12  
VARILEK CONFIDENCE 3004 0  
VARILEK GOLDIE 3228 314  
RITO 707 OF IDEAL 3407 7075  
S A V BLACKCAP MAY 4136  
MCRAE'S POWER POINT 48M  
MCRAE'S BRIDGET 51N

CE: 6.0 BW: 1.9 WW: 59 YW: 108 MCE: 6.0 M: 22

**lot39**

MAR MAC *Lily* 40H

KOF 40H | 28/01/2020 | 2140105 | BW 80 | SIRE VREIFIED

KM BROKEN BOW 002  
VARILEK GEDDES 7068  
VARILEK GOLDIE 5051 506

MOHNEN PULSE 533  
MAR MAC LILY 36F  
MAR MAC LILY 41D

SUMMITCREST COMPLETE 1P55  
SUMMITCREST PRINCESS 0P12  
VARILEK CONFIDENCE 3004 0  
VARILEK GOLDIE 3228 314  
MOHNEN HEARTRATE 1751  
MOHNEN JILT 2360  
LT DRIVEN 9087  
MAR MAC TIGER LILY 25Y

CE: 6.0 BW: 1.1 WW: 62 YW: 108 MCE: 6.0 M: 26



Calving ease bred into this female with Pulse-Geddes-Colossal.  
BRIDGET COW FAMILY.

AI Bred April 28 to  
Musgrave Colossal 137 -2021884-  
*In vet's opinion safe to AI*  
NO EXPOSURE



GRAND DAM | MAR MAC LILY 41D



A daughter of the Elite cow, KOF 91Y, from **SARAH COW FAMILY**. Her 1/2 sister is **LOT 27**. Sired by the popular Stevenson Turning Point sire of South Point, Agribition Past Champion Angus Bull. A female with lots of potential.



DAM | MAR MAC SALLY 91Y

**lot40**

MAR MAC *Sally* 7J

KOF 7J | 19/01/2021 | 2204690 | BW 62 | PARENT VERIFIED

PLATTEMERE WEIGH UP K360  
**STEVENSON TURNING POINT**  
 STEVENSON PRIDE I167X

S A V FINAL ANSWER 0035  
**MAR MAC SALLY 91Y**  
 MCRAE'S SARAH 131W

SITZ UPWARD 307R  
 BARBARA OF PLATTEMERE 337  
 S A V BISMARCK 5682  
 FSHK PRIDE 180  
 SITZ TRAVELER 8180  
 S A V EMULOUS 8145  
 JUSTAMERE 2466 TEMPO 192R  
 MCRAE'S SARAH 24L

CE: 18.0 BW: -3.8 WW: 46 YW: 79 MCE: 12.0 M: 26

**lot41**

MAR MAC *Bridget* 173J

KOF 173J | 10/03/2021 | 2232021 | BW 60

MERIT STONEY CREEK 4023  
**MERIT STONEY CREEK 7035E**  
 MERIT BLACKLASS 1184

HF TOMAHAWK 229E  
**MAR MAC BRIDGET 6G**  
 MAR MAC BRIDGET 1C

HF PROWLER 43U  
 MERIT PRIDE 2010  
 BEVERLY HILLS VISA 734  
 MERIT BLACKLASS 5195  
 HA COWBOY UP 5405  
 HF MAYFLOWER 191Z  
 HF TIGER 5T  
 MAR MAC BRIDGET 23A

CE: 13.0 BW: -1.5 WW: 48 YW: 82 MCE: 13.0 M: 24



Stoney Creek x Tomahawk cross in this mid March female.  
**BRIDGET COW FAMILY**





Stoney Creek female out of a very productive female who was a Connealy Imprint. This female goes back to the Brandi 81C from the **BRIDGET COW FAMILY**. Look at her birthdate March 30.



MCRAE'S BRANDI 81C

**lot42**

MAR MAC *Brandi* 189J

KOF 189J | 31/03/2021 | 2204502 | BW 88 | PARENT VERIFIED

MERIT STONEY CREEK 4023  
**MERIT STONEY CREEK 7035E**  
 MERIT BLACKLASS 1184

CONNEALY IMPRINT 8317  
**MAR MAC BRANDI 3B**  
 MAR MAC BRANDI 29Z

HF PROWLER 43U  
 MERIT PRIDE 2010  
 BEVERLY HILLS VISA 734  
 MERIT BLACKLASS 5195  
 CONNEALY IMPRESSION  
 ELLINA OF CONANGA 868 7127  
 MCATL PURE PRODUCT 903-55  
 MCRAES BRANDI 15S

CE: 2.0 BW: 3.1 WW: 52 YW: 85 MCE: 9.0 M: 22

**lot43**

MAR MAC *Cassidy* 191J

KOF 191J | 31/03/2021 | 2212204 | BW 82 | PARENT VERIFIED

MERIT STONEY CREEK 4023  
**MERIT STONEY CREEK 7035E**  
 MERIT BLACKLASS 1184

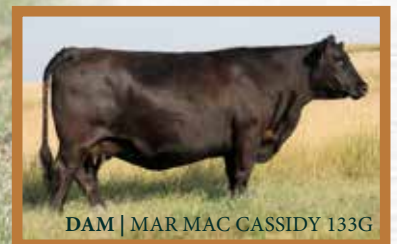
HF TOMAHAWK 229E  
**MAR MAC CASSIDY 133G**  
 MAR MAC CASSIDY 31D

HF PROWLER 43U  
 MERIT PRIDE 2010  
 BEVERLY HILLS VISA 734  
 MERIT BLACKLASS 5195  
 HA COWBOY UP 5405  
 HF MAYFLOWER 191Z  
 MAR MAC BLACK RIDGE 15B  
 MAR MAC CASSIDY 27Z

CE: -2.0 BW: 4.4 WW: 58 YW: 101 MCE: 6.0 M: 26



Showdown 2022 Show Prospect. A stylish March 31 Stoney Creek daughter whose dam unfortunately came up open. There is loads of future in this young female. **BRIDGET COW FAMILY**



DAM | MAR MAC CASSIDY 133G



# lot44

## SIX MILE *Horizon* 163H

SIXM 163H | 21/02/2020 | 2164362 | **BW 84** | PARENT VERIFIED

- |                                 |                             |
|---------------------------------|-----------------------------|
| SCHIEFELBEIN ATTRACTIVE 4565    | JMB TRACTION 292            |
| <b>SCHIEFELBEIN SHOWMAN 338</b> | FROSTY ANSWER 3979          |
| FROSTY ELBA 3745                | S A V RENOWN 3439           |
|                                 | FROSTY UPWARD 1100          |
|                                 | CONNEALY REFLECTION         |
| CONNEALY IMPRESSION 1525807     | PEARL PAMMY OF CONANGA 194  |
| <b>SIX MILE BLACKBIRD 46Z</b>   | STONEHAVEN 32R CHARTER 111T |
| SIX MILE BLACKBIRD 926W         | ROSE HILL BLACKBIRD 4N      |

**CE: 5.0   BW: 1.7   WW: 71   YW: 127   MCE: 8.0   M: 26**

In our search for a Black Angus bull, this spring we ran across Lot 125 at the Six Mile Bull Sale. We wanted to purchase a sire that would add value for his services. He caught our eye when we entered the pen. He has not let us down this young sire is full of potential. Along with his own group of cows, Horizon ran cleanup with the A.I. group and came off the pasture in amazing condition for a yearling bull.

Low birth weight, balanced set of EPD's out of a Blackbird female that is a consistent producer in the Six Mile program. Along with that you must admire his presence, length, freedom of movement and good feet. We love this young sire but because we are selling the Black Angus cows he needs to be used in the industry.

**MAR MAC FARMS IS RETAINING A 1/3 SEMEN INTEREST,  
SIX MILE RANCH IS RETAINING A 1/3 SEMEN INTEREST  
SELLING IS 1/3 SEMEN INTEREST AND FULL POSSESSION IN HORIZON.**



DAM | SIX MILE BLACKBIRD 46Z



FULL SIB





# lot45

## MERIT *Stoney Creek* 7035E

MSL 7035E | 01/02/2017 | 1986184 | BW 79 | PARENT VERIFIED

HF PROWLER 43U  
**MERIT STONEY CREEK 4023**  
 MERIT PRIDE 2010

BEVERLY HILLS VISA 734  
**MERIT BLACKLASS 1184**  
 MERIT BLACKLASS 5195

HF KODIAK 5R  
 HF ROSEBUD 98P  
 GDAR INSIGHT 7201  
 MERIT PRIDE 8659  
 GEIS MAXIMUM 80'01  
 CRESCENT CREEK ROSEBUD 155M  
 MINBURN MAIN EVENT 82K  
 MERIT BLACKLASS 1165

**CE: 2.0 BW: 3.1 WW: 51 YW: 79 MCE: 11.0 M: 25**



**Full Sib | Merit Blackclass 6060**  
 Current donor dam. She's the dam of highselling bulls  
 Merit McLaren \$28,000 & Merit Kingpin \$ 62,500

Stoney Creek seems to get better and better every year!

Each calf crop seems to be better than the last. Half of our bulls in the 2022 bull sale will be Stoney Creek sons. They are a thick, consistent, impressive group of bulls. Take a look at his daughters in this catalogue, and you will see what he produces for cows. We will be sad to see Stony Creek go, but we simply have too many daughters in the herd, and we need to get a new bloodline to use on them.

**OWNED BY MCRAE LAND & LIVESTOCK**





# McRae Land & Livestock

Welcome to the Mar Mac New Generation female sale, we are pleased to offer a taste of the McRae Land & Livestock program in this sale.

The "G" heifers we have on offer were selected to be in this sale as off-age bred heifers. They are all April-May born heifers that were born on pasture and raised in an extensively managed herd. They should be easy keeping females that will stand out in a winter calving program.

The story behind the McRae Land & Livestock cows for sale: In 2020 we had a bit of a breeding challenge, which resulted some open cows. This is your chance to make our misfortune your opportunity to own some proven cows who have lots of ability to go out and raise quality calves in your program.

- Brett & Charitel McRae



## lot 46

## MCRAE'S Lady 411G

MCLL 411G | 26/04/2019 | 2123890 | BW 80 | PARENT VERIFIED

TURIHAUA TEXAN B141  
TURIHAUA REX E297  
TURIHAUA B48

WILBAR EMBARGO 29Z  
SANDY BAR LADY 166C  
SANDY BAR LADY 21Y

HINGAIA 121  
TURIHAUA P43  
TURIHAUA BRODY Z277  
TURIHAUA Z48  
DMM TRADE SECRET 36X  
WILBAR ERELITE 962N  
SANDY BAR IDEAL 18S  
SANDY BAR LADY 15L

CE: 0.0 BW: 3.0 WW: 37 YW: 62 MCE: 5.0 M: 16

This is a heifer that offers exceptional performance and fleshing ability. Her dam 166C has a solid reputation for producing thick, heavy calves with lots of hair. I have seen 411G's sire, Turihaua Rex in person in New Zealand. He is one of the best footed Angus bull I have ever seen, and has since proven himself to sire loose hided, deep bodied calves. This is a rare combination of genetics that works well together, she might just be carrying your next herd bull!

AI Bred April 28 to SAV Rainfall 6848 -2013656-  
NO EXPOSURE



DAM | SANDY BAR LADY 166C



Here is a deep bodied, easy keeping, feminine heifer. Chisum 255 has been an excellent heifer bull with zero calving difficulty and moderate birth weights. With Tiger 170A and Blackberry 155X, this heifers pedigree is stacked with bulls who have proven themselves to make great cows.

AI Bred April 28 to  
SAV Rainfall 6848 -2013656-  
NO EXPOSURE



SIRE | S CHISUM 255

**lot47**

MCRAE'S *Tempress* 417G

MCLL 417G | 29/04/2019 | 2123810 | **BW 64 | SIRE VERIFIED**

S CHISUM 6175  
**S CHISUM 255**  
S BLOSSOM 0278

S ALLIANCE 3313  
S GLORIA 464  
SHIPWHEEL CHINOOK  
S BLOSSOM 8378  
MAR MAC TIGER 159Y  
GERLEI HEROINE 75Y  
MAR MAC BLACKBERRY 155X  
MCRAE'S TEMPTRESS 137W

MAR MAC TIGER 170A  
**MAR MAC BM TEMPTRESS 245E**  
MAR MAC TEMPTRESS 163Z

**CE: 12.0 BW: -0.8 WW: 50 YW: 84 MCE: 9.0 M: 22**

**lot48**

MCRAE'S *Sarah* 419G

MCLL 419G | 30/04/2019 | 2123815 | **BW 74 | PARENT VERIFIED**

PINEBANK WAIGROUP 41/97  
**H A R PINEBANK 443 202**  
DDA STELLA 443

PINEBANK WAIG 31/95  
PINEBANK 639/88  
DDA ALLY 69C  
DDA STELLA 216  
SITZ TRAVELER 8180  
S A V EMULOUS 8145  
CONNELY IMPRINT 8317  
MCRAE'S SARAH 17P

S A V FINAL ANSWER 0035  
**MAR MAC SARAH 63C**  
MAR MAC SARAH 1A

**CE: 10.0 BW: -0.4 WW: 42 YW: 69 MCE: 11.0 M: 14**



419G's maternal 1/2 sister was the bred heifer we sold in the Keystone Klassic sale last year. This heifer is feminine, deep bodied and easy keeling. Her sire, HAR Pinebank 443 202 has produced very stylish calves with lots of calving ease.

AI Bred April 28 to SAV Rainfall 6848  
-2013656-  
NO EXPOSURE





lot49

SANDY BAR *Pride* 44C

IJP 44C | 19/02/2015 | 1841619 | BW 63 | SIRE VERIFIED

THUNDER CREEK DENSITY 40Y	SA V 004 DENSITY 4336
<b>WIWA CREEK DENSITY 36'13</b>	THUNDER CREEK RUBY 73P
WIWA CREEK EVERGREEN 20'08	SWITZ MONARCH 7R
SANDY BAR IDEAL 18S	WIWA CREEK EVERGREEN 37L 18'05
<b>SANDY BAR PRIDE 109A</b>	PRAIRIELANE IDEAL 7451-2014
SANDY BAR PRIDE 133N	SANDY BAR PRIDE 89L
	RIVERCREST GUARANTEE CSP 2K
	SANDY BAR PRIDE 34X

CE: 11.0 BW: -0.4 WW: 30 YW: 50 MCE: 10.0 M: 29

Here is one of my all time favourite cows and I am heartbroken to see her go. She has had an excellent calf every year, including our 2nd high selling bull at the sale last year, and his full brother, who will be the feature of the 2022 bull sale. 44C is moderate framed, has excellent feet and a perfect udder. Don't miss this opportunity to pick up an elite maternal cow.

AI Bred April 28 to SAV Rainfall 6848 -2013656-  
NO EXPOSURE



SON | MCRAE'S PINEBANK 418G  
Sold in the 2021 Mar Mac Bull Sale



SON | MCRAE'S PINEBANK 411H  
Selling in the 2022 Mar Mac Bull Sale



This is Chan's favourite "E" cow. 245E is a very attractive long bodied female with a lot of life ahead of her. She's moderate framed, nicely put together and puts a lot into her calves each year. She won't disappoint in your herd. Her daughter, LOT 47 is one of our feature lots.

AI Bred April 28 to  
SAV Rainfall 6848 -2013656-  
NO EXPOSURE



**lot 50** MAR MAC BM *Tempstress* 245E

KOF 245E | 29/04/2017 | 1992562 | BW

MAR MAC TIGER 159Y  
**MAR MAC TIGER 170A**  
GERLEI HEROINE 75Y

MAR MAC BLACKBERRY 155X  
**MAR MAC TEMPTRESS 163Z**  
MCRAE'S TEMPTRESS 137W

HF TIGER 5T  
MCRAES BRIDGET 125T  
STUART DESTINATION 32S  
GERLEI HEROINE 27U  
RED MCRAES VISION 65T  
MCRAES BRIDGET 125T  
JUSTAMERE 2466 TEMPO 192R  
MCRAE'S SARAH 17P

CE: 8.0 BW: -0.3 WW: 34 YW: 67 MCE: 4.0 M: 27

**lot 51**

MCRAE'S *Cassidy* 434F

MCLL 434F | 10/05/2018 | 2064591 | BW 80 | SIRE VERIFIED

COLE CREEK CEDAR RIDGE 1V  
**MAR MAC BLACK RIDGE 15B**  
MCRAES BRIDGET 125T

MAR MAC ABERDEEN 19Y  
**MAR MAC CASSIDY 152A**  
MCRAE'S CASSIDY 111W

COLE CREEK BLACK CEDAR 46P  
COLE CREEK CLOVANADA 49S  
MCRAE'S POWER POINT 48M  
MCRAE'S BRIDGET 51N  
TC ABERDEEN 759  
MCRAES BRANDI 15S  
JUSTAMERE 2466 TEMPO 192R  
MCRAE'S CASSIDY 62P

CE: 6.0 BW: 1.9 WW: 34 YW: 70 MCE: 5.0 M: 27



A long bodied, high performance female out of the well known Cassidy cow family. Her mother 152A was purchased from Mar Mac Farms, and was known for performance and milking ability.

AI Bred May 18 to  
SAV Rainfall 6848 -2013656-  
*In vet's opinion safe to AI*  
NO EXPOSURE





DAM | MAR MAC BM QUEEN411D

lot **52**

RED MCRAE'S *Queen* 436G

MCLL 436G | 15/05/2019 | 2119145 | BW 66 | SIRE VERIFIED

- |                                    |                            |
|------------------------------------|----------------------------|
| RED SOO LINE CASH 9161             | RED CORNER CREEK CASH 2R   |
| <b>RED MOOSE CREEK RIPZONE 89D</b> | RED TR LYNN 301R           |
| RED MOOSE CREEK LAUREL 79A         | RED SVR GANGSTER 44X       |
|                                    | RED MOOSE CREEK LAUREL 21Y |
|                                    | RED BECKTON NEBULAP P707   |
| RED BROWN JYJ REDEMPTION Y1334     | RED JYJ MS JOLENE W16      |
| <b>RED MAR MAC BM QUEEN 411D</b>   | RED COCKBURN RIBEYE 346U   |
| RED MAR MAC QUEEN 178A             | RED MCRAES QUEEN 25X       |

CE: 4.0 BW: 0.6 WW: 46 YW: 82 MCE: 3.0 M: 25

*Red Angus*

Check out this eye-catching, moderate framed deep bodied Ripzone daughter! Her mother, 411D is my favourite Red Angus cow. She is very feminine, has a perfect udder and raises a great calf every year. 436G's 3/4 brother was our high selling Red Angus bull at the sale last year.

AI Bred April 20 to Red Franchise  
NO EXPOSURE

*Testimonial...*

I wanted to drop a line and let you know after a few years of having Angus some of my favourite and most dependable cows in the commercial and purebred herd have come from Mar Mac Farms. We've had drought conditions for the last four years and they don't miss a step working for us. I have 4 generations of daughters out of the commercials now, they all get picked as replacements. In particular the little purebred heifer Lainie bought at a Keystone Klassic sale from Brett a few years back has been a perfect cow in my opinion. Lainie had taken her to the Royal Manitoba Winter Fair fair and she was featured on their promo page the next year. She has produced a new herd sire that has only continued to look good as a yearling on drought pastures and breeding for us. Lainie is bringing a daughter to Ag Ex 2021. Strong and quality females have been the focus of our Angus program to establish a solid foundation for our young herd, and the gals purchased from your farm have proven to be some of our most consistent producers checking all the boxes!!

**CHRISTINA MUIR**

**CATTLEVIDS.CA**  
*videos online at*



## Red Angus

A daughter of the Brylor **MRS YOUNG COW FAMILY**. Mar Mac purchased this female in a Brylor Tradition Sale and she has never looked back. A moderate, feminine female who like her mother has the presence and profile. 53H's full brother sold in 2021 Bull Sale to Stone Ridge Farms. Mrs. Young has a Navigator son who will be very popular Bull Sale day. Bred to the calving ease sire Red Mar Mac DM Trooper (Franchise son x Mulberry cow) he was the top selling bull in 2020 to Lauron Red Angus. At the Red Roundup Sale 2021 his first daughter, Lauron Red Angus sold was impressive, long bodied, very correct female who sold for \$5900.

**AI Bred April 16 to Red Mar Mac DM Trooper 39G -2090497-**

*In vet's opinion safe to AI*  
NO EXPOSURE



DAM | RED BRYLOR MRS YOUNG 99A

### lot **53** RED MAR MAC MRS *Young* 53H

KOF 53H | 31/01/2020 | 2152286 | BW 78 | PARENT VERIFIED

RED PIE ONE OF A KIND 352	RED BUF CRK THE RIGHT KINDU199
RED RRA ONE AND ONLY 733	RED PIE FAYETTE 1160
RED WCR MISS BLACKBIRD DE 510Y	RED LAZY MC CC DETOUR 2W
	BLAIRS BLACKBIRD 107X
	RED UBAR SEQUOIA 202
RED BCC CRIMSON JEWELS 102U	RED RAVEN RIVER GOLDIE 47N
RED BRYLOR MRS YOUNG 99A	RED YY RED KNIGHT 640F
RED GET-A-LONG MRS YOUNG 109	RED GET-A-LONG MRS. YOUNG 095

CE: 9.0 BW: -0.2 WW: 38 YW: 65 MCE: 12.0 M: 22

### lot **54** RED MAR MAC *Frado* 125H

KOF 125H | 26/02/2020 | 2140208 | BW 84 | PARENT VERIFIED

RED CHOPPER K CAPACITY 308B	RED BADLANDS CAPACITY 37W
RED MAR MAC MARSHALL 21F	CHOPPER K TEWSOXRO 120X
RED BRYLOR BONITA 65X	RED SSS ARSON 85U
	RED BRYLOR BONITA 28T
	RED TER-RON PROWLER 833T
RED BLAIRS PROWLER 214X	RED JCC LASS 7R
RED MAR MAC FRADO 109B	RED BIEBER ROUGH RIDER 1071Z
RED MAR MAC FRADO 65Y	RED MCRAE'S FRADO 53J

CE: -1.0 BW: 2.4 WW: 39 YW: 62 MCE: 5.0 M: 25



## Red Angus

**FRADO COW FAMILY** out of a Red Brylor Bonita bred sire. Two of Mar Mac Farm's Top cow families all in this feminine broody Marshall female. This female will be a great way to start a cow family in your program with the proven Maternal genetics. Bred to the calving ease sire Franchise. A female to watch for sale day.

**AI Bred May 9 to Red 9 Mile Franchise 6305 -2017139-**  
*In vet's opinion safe to AI*  
NO EXPOSURE



DAM | BONITA 109B



## Red Angus

A female with added performance and growth. Her dam is a daughter of the Ribeye bull who left us a stout set of heavy milking females. When we selected the Buck Valley herd, the Siera cow family was our favorite moderate framed, beefy females and they have continued into our program. With Navigator, Ribeye and Rough Rider and bred to the breed legendary Mulberry here is an interesting female. Mulberry has 1634 progeny registered in the Canadian Angus herdbook, a never miss sire.

**AI Bred April 16 to Red Fine Line  
Mulberry 26P -1237972-  
In vet's opinion safe to AI  
NO EXPOSURE**



## lot 55

### RED MAR MAC *Siera* 49H

KOF 49H | 30/01/2020 | 2140111 | **BW 84 | PARENT VERIFIED**

RED GCC NAVIGATOR 1233	RED NBAR NEGOTIATOR L21
<b>RED BLAIR'S NAVIGATOR 37E</b>	RED LASA DIVIDE R519
RED BLAIRS FANNY 87Z	RED JORD REDWOOD 72X
	RED MISS GFT 40T FANNY
	RED BAR-E-L RIBEYE 103R
RED COCKBURN RIBEYE 346U	RED COCKBURN MS BOOT JACK 27N
<b>RED MAR MAC SIERA 80D</b>	RED BIEBER ROUGH RIDER 10712
RED MAR MAC SIERA 35Z	RED BUCK VALLEY SIERA 11P

**CE: -5.0 BW: 4.9 WW: 61 YW: 96 MCE: 2.0 M: 20**

## lot 56

### RED MAR MAC *Tara* 67H

KOF 67H | 04/02/2020 | 2152285 | **BW 92 | PARENT VERIFIED**

RED GCC NAVIGATOR 1233	RED NBAR NEGOTIATOR L21
<b>RED BLAIR'S NAVIGATOR 37E</b>	RED LASA DIVIDE R519
RED BLAIRS FANNY 87Z	RED JORD REDWOOD 72X
	RED MISS GFT 40T FANNY
	RED BASIN TRENDSETTER 6074
RED BIEBER ROUGH RIDER 10712	RED BIEBER ADELLE 8958
<b>RED MAR MAC TARA 5B</b>	MAR MAC BLACKBERRY 155X
MAR MAC TARA 150Z	RED BUCK VALLEY TARA 25P

**CE: 3.0 BW: 2.1 WW: 54 YW: 86 MCE: 6.0 M: 21**



## Red Angus

An interesting female with performance and femininity all in one. **TARA COW FAMILY** going back to females purchased from the Buck Valley program. Lots of maternal strength with Rough Rider, Mulberry and our new and exciting Navigator. Navigator's first son was the top selling bull in our 2021 Bull Sale to Six Mile Ranch and MC Quantock Livestock. The bull pen has a tremendous set of Navigator sons for 2022. This female bred to our calving ease sire, Generation, a direct son of Red McRae's Ruby 10T. The Generation calves come easy and then go on to grow. The first set of calves sell in our 2022 Sale.

**Exposed April 17- July 6 to Red  
Mar Mac Generation 51G -2112486-  
In vet's opinion safe to AI  
Due early February.**

# Red Angus

## REFERENCE SIRES



**RED BLAIR'S Navigator 37E**

BBC 37E | 11 APR 2017 | 2016094 | BW 89 LBS

RED NBAR NEGOTIATOR L21      RED JORD REDWOOD 72X  
 RED GCC NAVIGATOR 1233      RED BLAIRS FANNY 87Z  
 RED LASA DIVIDE R519      RED MISS GFT 40T FANNY

CE: -3.0    BW: 4.7    WW: 66    YW: 107    MCE: 5.0    M: 21



**RED MOOSE CREEK Ripzone 89D**

CDI 89D | 15 MAR 2016 | 1943154 | BW 86 LBS

RED CORNER CREEK CASH 2R      RED SVR GANGSTER 44X  
 RED SOO LINE CASH 9161      RED MOOSE CREEK LAUREL 79A  
 RED TR LYNN 301R      RED MOOSE CREEK LAUREL 21Y

CE: -3.0    BW: 3.0    WW: 49    YW: 84    MCE: -2.0    M: 28

### Service Sires



**RED MAR MAC GENERATION 51G**  
-2112486-



**RED MAR MAC DM TROOPER 39G**  
OWNED BY LAURON RED ANGUS

#### RED ANGUS BREED AVERAGE

CE: 2.5    BW: 1.2    WW: 38    YW: 64    MCE: 5.2    M: 23

Starting our Red Angus Program in 1983, we have worked hard on building cow families and producing bulls that work in the purebred and Commercial industry. We have selected a group of Red Angus females right off the top of our program and out of proven females that will add value to their offspring. We are extremely proud of our Red Angus herd bull line up and will continue on in the Red Angus business.



OWNED BY BRYLOR & MAR MAC

**RED MAR MAC Marshall 21F**

KOF 21F | 26 JAN 2018 | 2040499 | BW 86 LBS

RED BADLANDS CAPACITY 37W      RED SSS ARSON 85U  
 RED CHOPPER K CAPACITY 308B      RED BRYLOR BONITA 65X  
 CHOPPER K TEWSOXRO 120X      RED BRYLOR BONITA 28T

CE: -1.0    BW: 3.0    WW: 57    YW: 90    MCE: 4.0    M: 61



**MAR MAC UTAH Whiskey 52E**

KOB 52E | 3 FEB 2017 | PG1212662 | BW 92 LBS

DCR MR MOON SHINE X102      REMINGTON RED LABEL HR  
 TNT BOOTLEGGER Z268      MAR MAC UTAH'S DREAM 79U  
 TNT MISS W70      MAR MAC NIKE 73H

CE: 9.3    BW: 2.7    WW: 67.1    YW: 95.4    MCE: 5.0    M: 23.4



**OAKVIEW Hampton 286H**

OVS 286H | 10 JAN 2020 | PG1331501 | BW 80 LBS

CAPTAIN SCREAM 63D      WFL OUTLAW 4B  
 SVS BETTS 808F      OAKVIEW DANNI 286D  
 WFL RED SAGE 506C      PWK MS BODYBUILDER 23K94T

CE: 13.3    BW: 1.5    WW: 73.5    YW: 108.8    MCE: 10.5    M: 23.2

Since 1976, Mar Mac Farms has been involved in the Simmental breed. We have selected a productive group of young bred heifers this year for the sale, most sired by our senior herd sire, Mar Mac Utah Whiskey.

#### SIMMENTAL BREED AVERAGE

CE: 7.0    BW: 3.8    WW: 75.5    YW: 111.1    MCE: 4.0    M: 28.4

# Simmental

## REFERENCE SIRES





## Simmental

### HOMO POLLED RED PUREBRED

We purchased this female's dam out of the Keystone Konnection Simmental Sale from the Pizzezy Family. Boy what a job she has done leaving us a strong set of long bodied, stylish females. 114H will catch your eye as soon as you enter the pen with her balance, femininity and length of body. Bred to the calving ease sire Epic.

*Owned with Gordon Resources*

AI Bred April 16 to WS Epic E152  
-1237011-

*In vet's opinion safe to AI*  
NO EXPOSURE



## lot 57

### MAR MAC GR *Gisela* 114H

KOB114H | 23-FEB-20 | 1314436 | BW 90 | SIRE VERIFIED

TNT BOOTLEGGER Z268	DCR MR MOON SHINE X102
MAR MAC UTAH WHISKY 52E	TNT MISS W70
MAR MAC UTAH'S DREAM 79U	REMINGTON RED LABEL HR
	MAR MAC NIKE 73H
	WS BEEF MAKER R13
WS BEEF KING W107	WS MISS DREAMBOAT T17
CDP GISELA 25C	MJ CRIMSON TIDE 5W
CDP MARILYN 40A	CDP 66L MADISON

CE: 5.6 BW: 4.0 WW: 79.8 YW: 120.3 MCE: 3.0 M: 25.3

## lot 58

### MAR MAC *Tomasina* 22H

KOB 22H | 24-JAN-20 | 1313659 | BW 100 | SIRE VERIFIED

TNT BOOTLEGGER Z268	DCR MR MOON SHINE X102
MAR MAC UTAH WHISKY 52E	TNT MISS W70
MAR MAC UTAH'S DREAM 79U	REMINGTON RED LABEL HR
	MAR MAC NIKE 73H
	R PLUS BLACKEDGE
LFE BS LEWIS 322U	LFE BS MS ARNOLD 135S
MAR MAC TOMASINA 32Z	TWIN BRAE TOMAHAWK
TWIN BRAE TOMASINA 749X	TWIN BRAE TRUDIE 749T

CE: 8.0 BW: 2.4 WW: 76.1 YW: 115 MCE: 2.6 M: 23.7



## Simmental

### HOMO POLLED RED PUREBRED

A thick made stylish Whiskey daughter going back to a Stubby female from the TOMASINA COW FAMILY who always brought in a stout calf in the fall. She sells bred to our new

calving ease Betts son that we purchased from Oakview Simmentals this spring.

Exposed April 17-July 6 to  
Oakview Hampton 286H -1331501-

*In vet's opinion safe to exposure*  
Due early February



UTAH WHISKY SON



## Simmental

### POLLED RED PUREBRED

This is a full sister to the 65G female we sold to Come as U R Simmentals in the Keystone Konnection Simmental Sale 2020. Going back to the Deb Cow family, a female we purchased from Circle G in their dispersal. She did such a great job in our program. Thick made Whiskey daughter that should make a nice investment for your program. 28H sells bred to Limitless, the calving ease sire.

**AI Bred April 16 to**  
**WHF Limitless B011 -1199414-**  
*In vet's opinion safe to AI*  
**NO EXPOSURE**



FULL SISTER | MAR MAC DEB 65G

## lot 59

### MAR MAC *Deb* 28H

KOB 28H | 25-JAN-20 | 1313675 | **BW 88** | SIRE VERIFIED

TNT BOOTLEGGER Z268  
**MAR MAC UTAH WHISKY 52E**  
 MAR MAC UTAH'S DREAM 79U

SWAN LAKE TOMBSTONE 40Y  
**MAR MAC DEB 304B**  
 D BAR C DEB 372N

DCR MR MOON SHINE X102  
 TNT MISS W70  
 REMINGTON RED LABEL HR  
 MAR MAC NIKE 73H  
 LFE BLACK LAKOTA 385W  
 IPU MS WHISLER 67T  
 TNT SURVIVOR K220  
 D-BAR-C DEB 845H

**CE: 7.1 BW: 4.7 WW: 69.4 YW: 110 MCE: 2.8 M: 22.3**

## lot 60

### MAR MAC *Elite* 120H

KOB 120H | 25-FEB-20 | 1314438 | **BW 100** | SIRE VERIFIED

TNT BOOTLEGGER Z268  
**MAR MAC UTAH WHISKY 52E**  
 MAR MAC UTAH'S DREAM 79U

WFL WESTCOTT 24C  
**BERTS MS ELITE 33E**  
 BERT'S MS BONNIE 12B

DCR MR MOON SHINE X102  
 TNT MISS W70  
 REMINGTON RED LABEL HR  
 MAR MAC NIKE 73H  
 TNT 90 PROOF Z401  
 WFL SWEET LICIOUS 1044X  
 KWA FLYF RED MOUNTAIN 16Z  
 BERT'S MS REGAL

**CE: 5.8 BW: 4.4 WW: 77.5 YW: 106.3 MCE: 1.1 M: 28.1**



## Simmental

### POLLED RED PUREBRED

These Whiskey daughters just keep showing us the depth of quality in their bloodlines. Her dam was purchased out of the Pembina Triangle Sale from Bert's NR Simmental. 120H's full brother will sell in our 2022 Bull Sale. Gather up these Whiskey 1/2 sisters and start a program with them. The Whiskey's were sale features at the WLB Dispersal Sale.

**Exposed April 17-July 6 to**  
**Oakview Hampton 286H -1331501-**  
*In vet's opinion safe to exposure*  
**Due early February**





## Simmental

**HETERO POLLED RED PUREBRED**  
 I am a big fan of the thickness in the Utah Whiskey progeny and this bred heifer is no exception. She is the fourth calf of DMJ 32C who I purchased in 2016 at the Keystone Konnection sale from the Johns Family. She has been a huge asset in building my herd.  
 Owned MC-Three Farms  
 Tyson McRae 204-726-3205

**AI Bred April 16 to WS Epic E152**  
**-1237011-**  
*In vet's opinion safe to AI*  
**NO EXPOSURE**



FARM MANAGER | TYSON MCRAE

## lot61

### MC-THREE *Hanna* 71H

TJM 71H | 06-FEB-20 | 1316549 | **BW 102** | SIRE VERIFIED

TNT BOOTLEGGER Z268  
**MAR MAC UTAH WHISKY 52E**  
 MAR MAC UTAH'S DREAM 79U

MAR MAC TOMBOY 22A  
**DMJ MISS 32C**  
 DMJ MISS 16Z

DCR MR MOON SHINE X102  
 TNT MISS W70  
 REMINGTON RED LABEL HR  
 MAR MAC NIKE 73H  
 SWAN LAKE TOMBSTONE 40Y  
 MAR MAC COVER GIRL 28W  
 BDS MR BLK LABEL 41X  
 DMJ MISS 2W

**CE: 7.4 BW: 3.9 WW: 71.5 YW: 105.1 MCE: 4.8 M: 25.1**

## lot62

### MAR MAC *Barracuda* 46H

KOB 46H | 30-JAN-20 | 1314414 | **BW 90** | SIRE VERIFIED

TNT 90 PROOF Z401  
**WFL WESTCOTT 24C**  
 WFL SWEET LICIOUS 1044X

WHEATLAND EL TORO 958W  
**MAR MAC ROXY ROLLA 79Z**  
 MAR MAC SIERRA 53S

DCR MR MOON SHINE X102  
 TNT MISS S17  
 R PLUS REDGE 8018U  
 WFL RED LICIOUS  
 WHEATLAND BULL 680S  
 WHEATLAND LADY 228M  
 KENCO/MF POWERLINE 204L  
 MAR MAC CARLI 14N

**CE: 7.4 BW: 5.6 WW: 88.8 YW: 132 MCE: 3.6 M: 24.7**



## Simmental

**POLLED HOMO BLACK PUREBRED**  
 You can not have a Simmental Sale at Mar Mac without the strong influence of the Carli Cow Family. Carli has left a strong productive set of females at Mar Mac that always brings in the heavy weight calves. 46H sells bred to the calving ease sire Night Hawk. The Night Hawk bulls and females come easy and go on to grow. We have a number of sons in our 2022 Bull Sale. Owned Melissa McRae

**AI Bred April 16 to LFE Night Hawk**  
**3013D -1204539-**  
*In vet's opinion safe to AI*  
**NO EXPOSURE**



GRAND DAM | MAR MAC CARLI 14N

**lot63** *Driven X Tiger Lily*  
3 EMBRYOS

L T BANDWAGON 3105      HF TIGER 5T  
 LT DRIVEN 9087      MAR MAC TIGER LILY 25Y  
 L T ASHLEY 3087      MCRAE'S BRIDGET 33U\*

Here are proven genetics with these embryos Full sblings to Lot 3, 5, and 6 and Mar Mac Blueprint. Blueprint topped our Bull Sale selling to Blair's. Ag. The Blueprint daughters at Blair's in last years sale were an impressive group and he also sired lot 17.



LOT 63 PROGENY | MAR MAC BLUEPRINT 56B



LOT 64 PROGENY | MAR MAC RESERVE 58B

**lot64** *Resource X Bridget*  
4 EMBRYOS

RITO 707 OF IDEAL 3407 7075      MCRAE'S POWER POINT 48M  
 S A V RESOURCE 1441      MCRAES BRIDGET 125T  
 S A V BLACKCAP MAY 4136      MCRAE'S BRIDGET 51N

Full sblings to Lot 1 and Lot 7. If you want to add some females or stout bulls like 58B working in the Joe Bouchard program.

**lot65A** *Tiger X Bridget 125T*  
3 EMBRYOS

**lot65B** *Tiger X Bridget 125T*  
3 EMBRYOS

HF KODIAK 5R      MCRAE'S POWER POINT 48M  
 HF TIGER 5T      MCRAES BRIDGET 125T  
 HF ECHO 84R      MCRAE'S BRIDGET 51N

125T did an amazing job breeding. She may not have been the prettiest cow but she worked. Her son, Mar Mac Tiger 159Y sold to Kary Farm for \$9500 in our Bull Sale and was used heavily in their program. We used a son in our program. 27D pictured to the right is also a son working in the C +T Reynolds program.



LOT 65 PROGENY | MAR MAC DIVERSITY 27D



LOT 66 PROGENY | MAR MAC GOLD DIGGER 40G

**lot66** *Kozi X Tiger Lily*  
7 EMBRYOS

KOUPAL KOZI 22      HF TIGER 5T  
 KOUPAL KOZI 418      MAR MAC TIGER LILY 25Y  
 KOUPAL EBONETTE 263      MCRAE'S BRIDGET 33U\*

A growth and performance pedigree and son pictured working in the Ryan Schweitzer program.



LOT 67 PROGENY | MAR MAC BOND 95X

lot **67A** *Bond X KOB 51n*

9 EMBRYOS

lot **67B** *Bond X KOB 51n*

5 EMBRYOS

WEDDERLIE EVICTOR  
DUNLOUISE COMMANDER BOND  
CHAMPAGNE CHERRY BEE B117

F A R KRUGERRAND 410H  
MCRAE'S BRIDGET 51N  
MCRAE'S BRANDI 81C

51N is one of the females that started this Bridget program and has a lot of influence in our herd. She is also the dam of 33U another influential female in our program. Scottish Genetics!

lot **68A** *Sensation X Brandi 9T*

9 EMBRYOS

lot **68B** *Sensation X Brandi 9T*

8 EMBRYOS

CHS A V REGISTRY 2831  
SA V SENSATION 5615  
SA V BLACKCAP MAY 4136

SA V FINAL ANSWER 0035  
MCRAE'S BRANDI 9T  
MCRAE'S BRANDI 35G



LOT 68 PROGENY | MAR MAC SENSATION 25F

These embryos are full siblings to Lot 16 and son 25F working at G&B Farms. If you want to add frame and pounds these embryos are some to look at. Lot 16 is also a beautiful uddered young female. Brandi 9T is a premiere dam since 2014.

These embryos are proven matings and we do not just flush any cow they needed to prove that they could work for us.

EMBRYOS ARE ALL STORED AT DAVIS RAIDAN

BUYER IS RESPONSIBLE FOR PAYING FOR THE HANDLING AND SHIPPING CHARGES.

# Black Angus Semen

lot **69** MUSGRAVE 316 *Stunner*  
5 STRAWS -1995252-

lot **70** LT *Driven*  
21 STRAWS -1719199-

lot **71** SA V *Final Answer* 0035  
10 STRAWS -1061938-

lot **72** DMM *Makin Waves* 43M  
6 STRAWS -1122391-

lot **73** STEVENSON *Forutne* 425C  
5 STRAWS -812011-

lot **74** SA V *Ten Speed* 3022  
4 STRAWS -1823029-

lot **75** MCRAE'S *Direct Impact* 10  
20 STRAWS Connealy Kinkaid X McRae's Bridget 19F -1022442-

lot **76** CONNEALY *Kincaid*  
2 STRAWS -873659-

lot **77** *Traveler* 3173 G D A R  
1 STRAW -705930-

lot **78** KOU PAL *Kozi* 408  
5 STRAWS -95507-

lot **79** STEVENSON *Bruno* 561G  
4 STRAWS -95507-

ALL SEMEN MUST BE PICK UP AT MAR MAC FARMS



MARMACFARMS.NET

MARCH  
9<sup>TH</sup>  
2022

D|L|M|S  
www.dlms.ca

MAR MAC  
FARMS  
BULL SALE

AT THE FARM | BRANDON, MB

Yearling  
Red & Black Angus & Simmental Bulls  
Long Yearling  
Red & Black Angus Bulls  
Commercial  
Bred Heifers



### *Terms & Conditions*

**PIECE OF MIND** - Livestock insurance will be available sale day from Keystone Livestock Services.

**TERMS** - The terms of the sale are cash or cheque payable in Canadian Funds. The right of the property shall not pass until after settlement is made. The settlements must be made with the clerks before the cattle are released.

**ACCIDENTS** - Although every precaution will be taken to protect the safety and comfort of the buyers, neither the sale staff, auctioneer or Mar Mac assume any responsibility in this matter and disclaim any liability, legal or otherwise, in the event of an accident or loss of property.

**BREEDERS GUARANTEE** - All serviceable age females have been pregnancy tested by an accredited veterinarian giving estimated length of gestation. This estimated gestation period should be used as a guideline for calving. All breeding information is included by the lots. All heifer calves have been preg checked open by an accredited veterinarian. As this is a dispersal sale, all cattle sell with no further guarantee.



WE HAVE BEEN BLESSED TO MEET SOME AMAZING PEOPLE ALONG THE WAY IN OUR BLACK JOURNEY!



**BOB & JOYCE GORDON**



*Thank You*

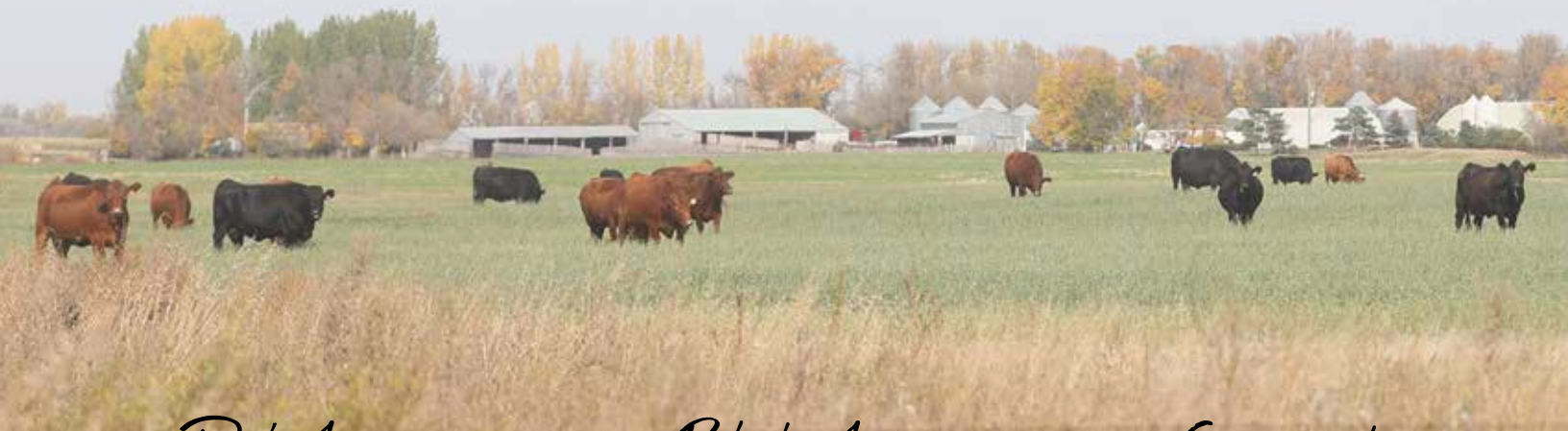
thank your to our parents for being involved in pursuing our dreams as beef producers. Encouraging us to work hard to achieve our goals



**ALLAN & MARGARET MCRAE**

# RETURN TO

MAR MAC FARMS  
RR 1 BOX 57  
BRANDON MANITOBA  
R7A 5Y1



*Red Angus*

*Black Angus*

*Simmental*

